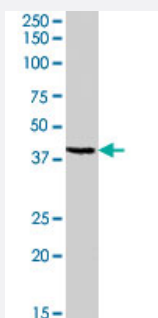


GPR119 polyclonal antibody

Catalog # PAB7479

Size 100 ug

Applications



Western Blot (Tissue lysate)

GPR119 polyclonal antibody (Cat # PAB7479) (0.3 ug/mL) staining of human ovary lysate (35 ug protein in RIPA buffer). Primary incubation was 1 hour. Detected by chemiluminescence.

Specification

Product Description Goat polyclonal antibody raised against synthetic peptide of GPR119.

Immunogen A synthetic peptide corresponding to human GPR119.

Sequence SARNCGPERPRESS

Host Goat

Theoretical MW (kDa) 36.9

Reactivity Human

Form Liquid

Purification Antigen affinity purification

Concentration 0.5 mg/mL

Quality Control Testing Antibody Reactive Against Synthetic Peptide.

Recommend Usage
 ELISA (1:2000)
 Western Blot (0.3-1 ug/mL)
 The optimal working dilution should be determined by the end user.

Storage Buffer	In Tris saline, pH 7.3 (0.5% BSA, 0.02% sodium azide)
Storage Instruction	Store at -20°C. Aliquot to avoid repeated freezing and thawing.
Note	This product contains sodium azide: a POISONOUS AND HAZARDOUS SUBSTANCE which should be handled by trained staff only.

Applications

- Western Blot (Tissue lysate)

GPR119 polyclonal antibody (Cat # PAB7479) (0.3 ug/mL) staining of human ovary lysate (35 ug protein in RIPA buffer). Primary incubation was 1 hour. Detected by chemiluminescence.

- Enzyme-linked Immunoabsorbent Assay

Gene Info — GPR119

Entrez GeneID	139760
Protein Accession#	NP_848566.1
Gene Name	GPR119
Gene Alias	GPCR2, MGC119957, hGPCR2
Gene Description	G protein-coupled receptor 119
Omim ID	300513
Gene Ontology	Hyperlink
Gene Summary	GPR119 is a member of the rhodopsin family of G protein-coupled receptors (GPRs) (Fredriksson et al., 2003 [PubMed 14623098]).[supplied by OMIM]
Other Designations	G-protein coupled receptor 2 OTTHUMP00000024018

Publication Reference

- [GPR119, a novel G protein-coupled receptor target for the treatment of type 2 diabetes and obesity.](#)

Overton HA, Fyfe MC, Reynet C.

British Journal of Pharmacology 2008 Mar; 153 Suppl 1:S76.

Application: WB-Tr, Monkey, COS-7 cells