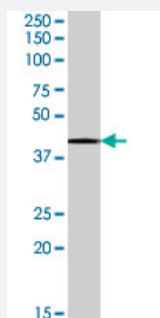


# SERPINB6 polyclonal antibody

Catalog # PAB7475

Size 100 ug

## Applications



### Western Blot (Tissue lysate)

SERPINB6 polyclonal antibody (Cat # PAB7475) (0.1 ug/mL) staining of human ovary lysate (35 ug protein in RIPA buffer). Primary incubation was 1 hour. Detected by chemiluminescence.

## Specification

**Product Description** Goat polyclonal antibody raised against synthetic peptide of SERPINB6.

**Immunogen** A synthetic peptide corresponding to human SERPINB6.

**Sequence** C-NWDEQFDKENTEER

**Host** Goat

**Theoretical MW (kDa)** 42.6

**Reactivity** Human

**Form** Liquid

**Purification** Antigen affinity purification

**Concentration** 0.5 mg/mL

**Quality Control Testing** Antibody Reactive Against Synthetic Peptide.

**Recommend Usage**  
 ELISA (1:128000)  
 Western Blot (0.1-0.3 ug/mL)  
 The optimal working dilution should be determined by the end user.

Storage Buffer	In Tris saline, pH 7.3 (0.5% BSA, 0.02% sodium azide)
Storage Instruction	Store at -20°C. Aliquot to avoid repeated freezing and thawing.
Note	This product contains sodium azide: a POISONOUS AND HAZARDOUS SUBSTANCE which should be handled by trained staff only.

## Applications

- Western Blot (Tissue lysate)

SERPINB6 polyclonal antibody (Cat # PAB7475) (0.1 ug/mL) staining of human ovary lysate (35 ug protein in RIPA buffer). Primary incubation was 1 hour. Detected by chemiluminescence.

- Enzyme-linked Immunoabsorbent Assay

## Gene Info — SERPINB6

Entrez GeneID	<a href="#">5269</a>
Protein Accession#	<a href="#">NP_004559.4</a>
Gene Name	SERPINB6
Gene Alias	CAP, DKFZp686I04222, MGC111370, MSTP057, PI6, PTI, SPI3
Gene Description	serpin peptidase inhibitor, clade B (ovalbumin), member 6
Omim ID	<a href="#">173321</a>
Gene Ontology	<a href="#">Hyperlink</a>
Gene Summary	clade B (ovalbumin)
Other Designations	OTTHUMP00000017778 OTTHUMP00000017779 OTTHUMP00000017780 OTTHUMP00000017781 OTTHUMP00000017782 OTTHUMP00000017783 protease inhibitor 6 (placental thrombin inhibitor) serine (or cysteine) proteinase inhibitor, clade B (ovalbumin), member 6

## Publication Reference

- [Intracellular serpin SERPINB6 \(PI6\) is abundantly expressed by human mast cells and forms complexes with beta-tryptase monomers.](#)

Strik MC, Wolbink A, Wouters D, Bladergroen BA, Verlaan AR, van Houdt IS, Hijlkema S, Hack CE, Kummer JA.

Blood 2004 Apr; 103(7):2710.

Application: ELISA, IF, IHC-P, IP, WB, Human, Diffuse cutaneous mastocytosis, HeLa, HMC-1, Jurkat cells, Mastocytoma, Mast cells, Urticaria pigmentosa