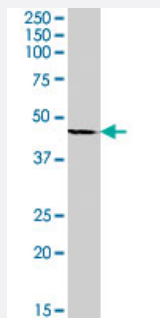


LHX2 polyclonal antibody

Catalog # PAB7474

Size 100 ug

Applications



Western Blot (Cell lysate)

LHX2 polyclonal antibody (Cat # PAB7474) (1 ug/mL) staining of Daudi lysate (35 ug protein in RIPA buffer). Primary incubation was 1 hour. Detected by chemiluminescence.

Specification

Product Description Goat polyclonal antibody raised against synthetic peptide of LHX2.

Immunogen A synthetic peptide corresponding to human LHX2.

Sequence C-NLEGHEPHSPSQ

Host Goat

Theoretical MW (kDa) 44.4

Reactivity Human

Form Liquid

Purification Antigen affinity purification

Concentration 0.5 mg/mL

Quality Control Testing Antibody Reactive Against Synthetic Peptide.

Recommend Usage
 ELISA (1:4000)
 Western Blot (1-3 ug/mL)
 The optimal working dilution should be determined by the end user.

Storage Buffer	In Tris saline, pH 7.3 (0.5% BSA, 0.02% sodium azide)
Storage Instruction	Store at -20°C. Aliquot to avoid repeated freezing and thawing.
Note	This product contains sodium azide: a POISONOUS AND HAZARDOUS SUBSTANCE which should be handled by trained staff only.

Applications

- Western Blot (Cell lysate)

LHX2 polyclonal antibody (Cat # PAB7474) (1 ug/mL) staining of Daudi lysate (35 ug protein in RIPA buffer). Primary incubation was 1 hour. Detected by chemiluminescence.

- Enzyme-linked Immunoabsorbent Assay

Gene Info — LHX2

Entrez GeneID	9355
Protein Accession#	NP_004780.3
Gene Name	LHX2
Gene Alias	LH2, MGC138390, hLhx2
Gene Description	LIM homeobox 2
Omim ID	603759
Gene Ontology	Hyperlink
Gene Summary	This gene encodes a protein belonging to a large protein family, members of which carry the LIM domain, a unique cysteine-rich zinc-binding domain. The encoded protein may function as a transcriptional regulator. The protein can recapitulate or rescue phenotypes in Drosophila caused by a related protein, suggesting conservation of function during evolution. [provided by RefSeq]
Other Designations	LIM HOX gene 2 LIM homeobox protein 2 OTTHUMP00000022092

Publication Reference

- [Lhx2 selector activity specifies cortical identity and suppresses hippocampal organizer fate.](#)

Mangale VS, Hirokawa KE, Satyaki PR, Gokulchandran N, Chikbire S, Subramanian L, Shetty AS, Martynoga B, Paul J, Mai MV, Li Y, Flanagan LA, Tole S, Monuki ES.

Science 2008 Jan; 319(5861):304.

Application: IF, IHC, Mouse, Mouse embryo