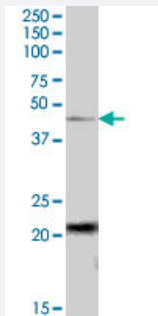


# TXNDC4 polyclonal antibody

Catalog # PAB7470

Size 100 ug

## Applications



### Western Blot (Cell lysate)

TXNDC4 polyclonal antibody (Cat # PAB7470) (0.2 ug/mL) staining of K-562 lysate (35 ug protein in RIPA buffer). Primary incubation was 1 hour. Detected by chemiluminescence.

## Specification

**Product Description** Goat polyclonal antibody raised against synthetic peptide of TXNDC4.

**Immunogen** A synthetic peptide corresponding to human TXNDC4.

**Sequence** C-EQKDSDNRYVFER

**Host** Goat

**Theoretical MW (kDa)** 47

**Reactivity** Human

**Form** Liquid

**Purification** Antigen affinity purification

**Concentration** 0.5 mg/mL

**Quality Control Testing** Antibody Reactive Against Synthetic Peptide.

**Recommend Usage**  
 ELISA (1:32000)  
 Western Blot (0.2-0.6 ug/mL)  
 The optimal working dilution should be determined by the end user.

Storage Buffer	In Tris saline, pH 7.3 (0.5% BSA, 0.02% sodium azide)
Storage Instruction	Store at -20°C. Aliquot to avoid repeated freezing and thawing.
Note	This product contains sodium azide: a POISONOUS AND HAZARDOUS SUBSTANCE which should be handled by trained staff only.

## Applications

- Western Blot (Cell lysate)

TXNDC4 polyclonal antibody (Cat # PAB7470) (0.2 ug/mL) staining of K-562 lysate (35 ug protein in RIPA buffer). Primary incubation was 1 hour. Detected by chemiluminescence.

- Enzyme-linked Immunoabsorbent Assay

## Gene Info — TXNDC4

Entrez GeneID	<a href="#">23071</a>
Protein Accession#	<a href="#">NP_055866.1</a>
Gene Name	TXNDC4
Gene Alias	ERP44, KIAA0573
Gene Description	thioredoxin domain containing 4 (endoplasmic reticulum)
Omim ID	<a href="#">609170</a>
Gene Ontology	<a href="#">Hyperlink</a>
Other Designations	OTTHUMP00000021788 OTTHUMP00000063799 endoplasmic reticulum resident protein 44 kDa

## Publication Reference

- [Sequential steps and checkpoints in the early exocytic compartment during secretory IgM biogenesis.](#)

Anelli T, Ceppi S, Bergamelli L, Cortini M, Masciarelli S, Valetti C, Sitia R.

The EMBO Journal 2007 Oct; 26(19):4177.

Application: IF, WB, Human, Mouse, HeLa, Mouse B cells, NIH 3T3 cells

## Disease

- [Cardiovascular Diseases](#)
- [Diabetes Mellitus](#)
- [Edema](#)