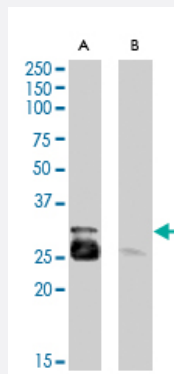


MYF5 polyclonal antibody

Catalog # PAB7461 Size 100 ug

Applications



Western Blot (Tissue lysate)

MYF5 polyclonal antibody (Cat # PAB7461) (0.5 ug/mL) staining of human muscle lysate (35 ug protein in RIPA buffer) with (B) and without (A) blocking with the immunising peptide. Primary incubation was 1 hour. Detected by chemiluminescence.

Specification

Product Description	Goat polyclonal antibody raised against synthetic peptide of MYF5.
Immunogen	A synthetic peptide corresponding to human MYF5.
Sequence	PECNSPVWSRKSST
Host	Goat
Theoretical MW (kDa)	28.4
Reactivity	Human
Form	Liquid
Purification	Antigen affinity purification
Concentration	0.5 mg/mL
Quality Control Testing	Antibody Reactive Against Synthetic Peptide.

Recommend Usage	ELISA (1:32000) Western Blot (0.5-1.5 ug/mL) The optimal working dilution should be determined by the end user.
Storage Buffer	In Tris saline, pH 7.3 (0.5% BSA, 0.02% sodium azide)
Storage Instruction	Store at -20°C. Aliquot to avoid repeated freezing and thawing.
Note	This product contains sodium azide: a POISONOUS AND HAZARDOUS SUBSTANCE which should be handled by trained staff only.

Applications

- Western Blot (Tissue lysate)

MYF5 polyclonal antibody (Cat # PAB7461) (0.5 ug/mL) staining of human muscle lysate (35 ug protein in RIPA buffer) with (B) and without (A) blocking with the immunising peptide. Primary incubation was 1 hour. Detected by chemiluminescence.

- Enzyme-linked Immunoabsorbent Assay

Gene Info — MYF5

Entrez GeneID	4617
Protein Accession#	NP_005584.1
Gene Name	MYF5
Gene Alias	bHLHc2
Gene Description	myogenic factor 5
Omim ID	159990
Gene Ontology	Hyperlink
Other Designations	-

Publication Reference

- [Asymmetric self-renewal and commitment of satellite stem cells in muscle.](#)

Kuang S, Kuroda K, Le Grand F, Rudnicki MA.

Cell 2007 Jun; 129(5):999.