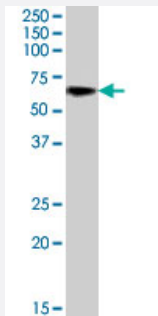


RPE65 polyclonal antibody

Catalog # PAB7451

Size 100 ug

Applications



Western Blot (Tissue lysate)

RPE65 polyclonal antibody (Cat # PAB7451) (0.5 ug/mL) staining of rat retina lysate (35 ug protein in RIPA buffer). Primary incubation was 1 hour. Detected by chemiluminescence.

Specification

Product Description Goat polyclonal antibody raised against synthetic peptide of RPE65.

Immunogen A synthetic peptide corresponding to human RPE65.

Sequence C-EVKKNARKAPQPE

Host Goat

Theoretical MW (kDa) 60.9

Reactivity Rat

Form Liquid

Purification Antigen affinity purification

Concentration 0.5 mg/mL

Quality Control Testing Antibody Reactive Against Synthetic Peptide.

Recommend Usage
ELISA (1:32000)
Western Blot (0.5-1.5 ug/mL)
The optimal working dilution should be determined by the end user.

Storage Buffer	In Tris saline, pH 7.3 (0.5% BSA, 0.02% sodium azide)
Storage Instruction	Store at -20°C. Aliquot to avoid repeated freezing and thawing.
Note	This product contains sodium azide: a POISONOUS AND HAZARDOUS SUBSTANCE which should be handled by trained staff only.

Applications

- Western Blot (Tissue lysate)

RPE65 polyclonal antibody (Cat # PAB7451) (0.5 ug/mL) staining of rat retina lysate (35 ug protein in RIPA buffer). Primary incubation was 1 hour. Detected by chemiluminescence.

- Enzyme-linked Immunoabsorbent Assay

Gene Info — RPE65

Entrez GeneID	6121
Protein Accession#	NP_000320.1
Gene Name	RPE65
Gene Alias	LCA2, RP20, mRPE65, rd12, sRPE65
Gene Description	retinal pigment epithelium-specific protein 65kDa
Omim ID	180069 204100
Gene Ontology	Hyperlink

Gene Summary	This gene encodes a protein which is located in the retinal pigment epithelium and is involved in the production of 11-cis retinal and in visual pigment regeneration. There are two forms of this protein, a soluble form called sRPE65, and a palmitoylated, membrane-bound form known as mRPE65. mRPE65 serves as the palmitoyl donor for lecithin retinol acyl transferase (LRAT), the enzyme that catalyzes the vitamin A to all trans retinol step of the chromophore regeneration process. Both mRPE65 and sRPE65 also serve as regulatory proteins, with the ratio and concentrations of these molecules playing a role in the inhibition of 11-cis retinal synthesis. Mutations in this gene have been associated with Leber congenital amaurosis type 2 (LCA2) and retinitis pigmentosa. [provided by RefSeq]
---------------------	---

Other Designations	OTTHUMP00000010788 RBP-binding membrane protein p63 retinal pigment epithelium-specific 61 kDa protein retinal pigment epithelium-specific protein (65kD) retinitis pigmentosa 20 (autosomal recessive)
---------------------------	---

Publication Reference

- [Gene therapeutic prospects in early onset of severe retinal dystrophy: restoration of vision in RPE65 Briard dogs using an AAV serotype 4 vector that specifically targets the retinal pigmented epithelium.](#)

Rolling F, Le Meur G, Stieger K, Smith AJ, Weber M, Deschamps JY, Nivard D, Mendes-Madeira A, Provost N, Pereon Y, Chereil Y, Ali RR, Hamel C, Moullier P, Rolling F.

Bull Mem Acad R Med Belg 2006 Jan; 161(10-12):497.

Pathway

- [Retinol metabolism](#)

Disease

- [Blindness](#)
- [Optic Atrophy](#)
- [Retinal Degeneration](#)
- [Retinal Diseases](#)
- [Retinitis Pigmentosa](#)