

# PC polyclonal antibody

Catalog # PAB7443

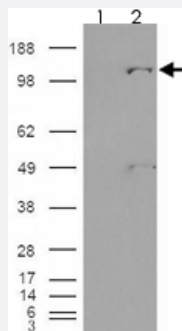
Size 100 ug

## Applications



### Western Blot (Tissue lysate)

PC polyclonal antibody (Cat # PAB7443) (0.03 ug/mL) staining of mouse liver lysate (35 ug protein in RIPA buffer). Primary incubation was 1 hour. Detected by chemiluminescence.



### Western Blot (Transfected lysate)

293 overexpressing Human PC and probed with PC polyclonal antibody (Cat # PAB7443) (mock transfection in first lane), tested by Origene.

## Specification

Product Description	Goat polyclonal antibody raised against synthetic peptide of PC.
Immunogen	A synthetic peptide corresponding to human PC.
Sequence	C-KFKEVKKAYVEANQ
Host	Goat
Theoretical MW (kDa)	130
Reactivity	Mouse
Specificity	All reported variants (NP_000911.2, NP_0010.35806.1, NP_071504.2) represent identical protein.

Form	Liquid
Purification	Antigen affinity purification
Concentration	0.5 mg/mL
Quality Control Testing	Antibody Reactive Against Synthetic Peptide.
Recommend Usage	ELISA (1:16000) Western Blot (0.03-0.1 ug/mL) The optimal working dilution should be determined by the end user.
Storage Buffer	In Tris saline, pH 7.3 (0.5% BSA, 0.02% sodium azide)
Storage Instruction	Store at -20°C. Aliquot to avoid repeated freezing and thawing.
Note	This product contains sodium azide: a POISONOUS AND HAZARDOUS SUBSTANCE which should be handled by trained staff only.

## Applications

- Western Blot (Tissue lysate)

PC polyclonal antibody (Cat # PAB7443) (0.03 ug/mL) staining of mouse liver lysate (35 ug protein in RIPA buffer). Primary incubation was 1 hour. Detected by chemiluminescence.

- Western Blot (Transfected lysate)

293 overexpressing Human PC and probed with PC polyclonal antibody (Cat # PAB7443) (mock transfection in first lane), tested by Origene.

- Enzyme-linked Immunoabsorbent Assay

## Gene Info — PC

Entrez GeneID	<a href="#">5091</a>
Protein Accession#	<a href="#">NP_000911.2</a> ; <a href="#">NP_0010.35806.1</a> ; <a href="#">NP_071504.2</a>
Gene Name	PC
Gene Alias	PCB
Gene Description	pyruvate carboxylase
Omim ID	<a href="#">266150</a> <a href="#">608786</a>

## Gene Ontology

[Hyperlink](#)

## Gene Summary

This gene encodes pyruvate carboxylase, which requires biotin and ATP to catalyse the carboxylation of pyruvate to oxaloacetate. The active enzyme is a homotetramer arranged in a tetrahedron which is located exclusively in the mitochondrial matrix. Pyruvate carboxylase is involved in gluconeogenesis, lipogenesis, insulin secretion and synthesis of the neurotransmitter glutamate. Mutations in this gene have been associated with pyruvate carboxylase deficiency. Alternatively spliced transcript variants with different 5' UTRs, but encoding the same protein, have been found for this gene. [provided by RefSeq]

## Other Designations

-

## Publication Reference

- [Domain architecture of pyruvate carboxylase, a biotin-dependent multifunctional enzyme.](#)

St Maurice M, Reinhardt L, Surinya KH, Attwood PV, Wallace JC, Cleland WW, Rayment I.

Science 2007 Aug; 317(5841):1076.

## Pathway

- [Citrate cycle \(TCA cycle\)](#)
- [Metabolic pathways](#)
- [Pyruvate metabolism](#)

## Disease

- [Abortion](#)
- [Pregnancy Complications](#)
- [Thrombophilia](#)