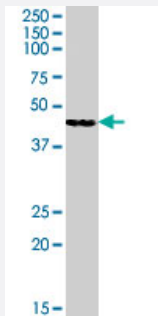


# GOT2 polyclonal antibody

Catalog # PAB7440      Size 100 ug

## Applications



### Western Blot (Tissue lysate)

GOT2 polyclonal antibody (Cat # PAB7440) (0.03 ug/mL) staining of human kidney lysate (35 ug protein in RIPA buffer). Primary incubation was 1 hour. Detected by chemiluminescence.

## Specification

<b>Product Description</b>	Goat polyclonal antibody raised against synthetic peptide of GOT2.
<b>Immunogen</b>	A synthetic peptide corresponding to amino acids 295-306 of human GOT2.
<b>Sequence</b>	CKDADEAKRVES
<b>Host</b>	Goat
<b>Theoretical MW (kDa)</b>	47.5
<b>Reactivity</b>	Human
<b>Form</b>	Liquid
<b>Purification</b>	Antigen affinity purification
<b>Concentration</b>	0.5 mg/mL
<b>Quality Control Testing</b>	Antibody Reactive Against Synthetic Peptide.
<b>Recommend Usage</b>	ELISA (1:32000) Western Blot (0.03-0.1 ug/mL) The optimal working dilution should be determined by the end user.

<b>Storage Buffer</b>	In Tris saline, pH 7.3 (0.5% BSA, 0.02% sodium azide)
<b>Storage Instruction</b>	Store at -20°C. Aliquot to avoid repeated freezing and thawing.
<b>Note</b>	This product contains sodium azide: a POISONOUS AND HAZARDOUS SUBSTANCE which should be handled by trained staff only.

## Applications

- Western Blot (Tissue lysate)

GOT2 polyclonal antibody (Cat # PAB7440) (0.03 ug/mL) staining of human kidney lysate (35 ug protein in RIPA buffer). Primary incubation was 1 hour. Detected by chemiluminescence.

- Enzyme-linked Immunoabsorbent Assay

## Gene Info — GOT2

<b>Entrez GeneID</b>	<a href="#">2806</a>
<b>Protein Accession#</b>	<a href="#">NP_002071.2</a>
<b>Gene Name</b>	GOT2
<b>Gene Alias</b>	FLJ40994, KAT4, KATIV, mitAAT
<b>Gene Description</b>	glutamic-oxaloacetic transaminase 2, mitochondrial (aspartate aminotransferase 2)
<b>Omim ID</b>	<a href="#">138150</a>
<b>Gene Ontology</b>	<a href="#">Hyperlink</a>
<b>Gene Summary</b>	Glutamic-oxaloacetic transaminase is a pyridoxal phosphate-dependent enzyme which exists in cytoplasmic and inner-membrane mitochondrial forms, GOT1 and GOT2, respectively. GOT plays a role in amino acid metabolism and the urea and tricarboxylic acid cycles. The two enzymes are homodimeric and show close homology. [provided by RefSeq]
<b>Other Designations</b>	aspartate aminotransferase 2 kynurenine aminotransferase IV

## Publication Reference

- [From the liver to the brain across the blood-brain barrier.](#)

Teichberg VI.

PNAS 2007 Apr; 104(18):7315.

## Pathway

- [Alanine](#)
- [Arginine and proline metabolism](#)
- [Biosynthesis of alkaloids derived from ornithine](#)
- [Biosynthesis of phenylpropanoids](#)
- [Biosynthesis of plant hormones](#)
- [Carbon fixation in photosynthetic organisms](#)
- [Cysteine and methionine metabolism](#)
- [Isoquinoline alkaloid biosynthesis](#)
- [Metabolic pathways](#)
- [Novobiocin biosynthesis](#)
- [Phenylalanine](#)
- [Phenylalanine metabolism](#)
- [Tyrosine metabolism](#)