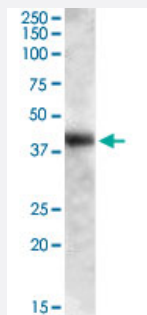


GOT1 polyclonal antibody

Catalog # PAB7415

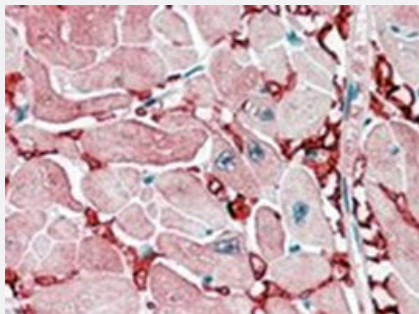
Size 100 ug

Applications



Western Blot (Tissue lysate)

GOT1 polyclonal antibody (Cat # PAB7415) (0.01 ug/mL) staining of human liver lysate (35 ug protein in RIPA buffer). Primary incubation was 1 hour. Detected by chemiluminescence.



Immunohistochemistry (Formalin/PFA-fixed paraffin-embedded sections)

GOT1 polyclonal antibody (Cat # PAB7415, 2.5 ug/mL) staining of paraffin embedded human heart. Steamed antigen retrieval with citrate buffer pH 6, AP-staining.

Specification

Product Description	Goat polyclonal antibody raised against synthetic peptide of GOT1.
Immunogen	A synthetic peptide corresponding to amino acids 157-167 of human GOT1.
Sequence	C-RSYRYWDAEKR
Host	Goat
Theoretical MW (kDa)	46.2
Reactivity	Human
Form	Liquid

Purification	Antigen affinity purification
Concentration	0.5 mg/mL
Quality Control Testing	Antibody Reactive Against Synthetic Peptide.
Recommend Usage	ELISA (1:4000) Western blot (0.01-1 ug/mL) Immunohistochemistry (Formalin/PFA-fixed paraffin-embedded sections) (2-3 ug/mL) The optimal working dilution should be determined by the end user.
Storage Buffer	In Tris saline, pH 7.3 (0.5% BSA, 0.02% sodium azide)
Storage Instruction	Store at -20°C. Aliquot to avoid repeated freezing and thawing.
Note	This product contains sodium azide: a POISONOUS AND HAZARDOUS SUBSTANCE which should be handled by trained staff only.

Applications

- Western Blot (Tissue lysate)

GOT1 polyclonal antibody (Cat # PAB7415) (0.01 ug/mL) staining of human liver lysate (35 ug protein in RIPA buffer). Primary incubation was 1 hour. Detected by chemiluminescence.

- Immunohistochemistry (Formalin/PFA-fixed paraffin-embedded sections)

GOT1 polyclonal antibody (Cat # PAB7415, 2.5 ug/mL) staining of paraffin embedded human heart. Steamed antigen retrieval with citrate buffer pH 6, AP-staining.

- Enzyme-linked Immunoabsorbent Assay

Gene Info — GOT1

Entrez GeneID	2805
Protein Accession#	NP_002070.1
Gene Name	GOT1
Gene Alias	GIG18
Gene Description	glutamic-oxaloacetic transaminase 1, soluble (aspartate aminotransferase 1)
Omim ID	138180

Gene Ontology

[Hyperlink](#)

Gene Summary

Glutamic-oxaloacetic transaminase is a pyridoxal phosphate-dependent enzyme which exists in cytoplasmic and mitochondrial forms, GOT1 and GOT2, respectively. GOT plays a role in amino acid metabolism and the urea and tricarboxylic acid cycles. The two enzymes are homodimeric and show close homology. [provided by RefSeq]

Other Designations

OTTHUMP00000020254|aspartate aminotransferase 1|growth-inhibiting protein 18

Publication Reference

- [From the liver to the brain across the blood-brain barrier.](#)

Teichberg VI.

PNAS 2007 Apr; 104(18):7315.

Pathway

- [Alanine](#)
- [Arginine and proline metabolism](#)
- [Biosynthesis of alkaloids derived from ornithine](#)
- [Biosynthesis of phenylpropanoids](#)
- [Biosynthesis of plant hormones](#)
- [Carbon fixation in photosynthetic organisms](#)
- [Cysteine and methionine metabolism](#)
- [Isoquinoline alkaloid biosynthesis](#)
- [Metabolic pathways](#)
- [Novobiocin biosynthesis](#)
- [Phenylalanine](#)
- [Phenylalanine metabolism](#)
- [Tyrosine metabolism](#)