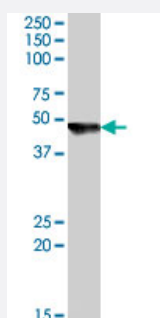


CYTH2 polyclonal antibody

Catalog # PAB7405

Size 100 ug

Applications



Western Blot (Tissue lysate)

CYTH2 polyclonal antibody (Cat # PAB7405) (0.5 ug/mL) staining of human brain (cerebellum) lysate (35 ug protein in RIPA buffer). Primary incubation was 1 hour. Detected by chemiluminescence.

Specification

Product Description	Goat polyclonal antibody raised against synthetic peptide of CYTH2.
Immunogen	A synthetic peptide corresponding to human CYTH2.
Sequence	EDGVYEPPDLTP-C
Host	Goat
Theoretical MW (kDa)	46.5, 46.5
Reactivity	Human, Rat
Specificity	This antibody is expected to recognize both reported isoforms (NP_004219.2, NP_059431.1).
Form	Liquid
Purification	Antigen affinity purification
Concentration	0.5 mg/mL
Quality Control Testing	Antibody Reactive Against Synthetic Peptide.

Recommend Usage	ELISA (1:32000) Western Blot (0.5-1.5 ug/mL) The optimal working dilution should be determined by the end user.
Storage Buffer	In Tris saline, pH 7.3 (0.5% BSA, 0.02% sodium azide)
Storage Instruction	Store at -20°C. Aliquot to avoid repeated freezing and thawing.
Note	This product contains sodium azide: a POISONOUS AND HAZARDOUS SUBSTANCE which should be handled by trained staff only.

Applications

- Western Blot (Tissue lysate)

CYTH2 polyclonal antibody (Cat # PAB7405) (0.5 ug/mL) staining of human brain (cerebellum) lysate (35 ug protein in RIPA buffer). Primary incubation was 1 hour. Detected by chemiluminescence.

- Enzyme-linked Immunoabsorbent Assay

Gene Info — CYTH2

Entrez GeneID	9266
Protein Accession#	NP_004219.2;NP_059431.1
Gene Name	CYTH2
Gene Alias	ARNO, CTS18, CTS18.1, PSCD2, PSCD2L, SEC7L, Sec7p-L, Sec7p-like
Gene Description	cytohesin 2
Omim ID	602488
Gene Ontology	Hyperlink
Gene Summary	The protein encoded by this gene is a member of the PSCD family. Members of this family have identical structural organization that consists of an N-terminal coiled-coil motif, a central Sec7 domain, and a C-terminal pleckstrin homology (PH) domain. The coiled-coil motif is involved in homodimerization, the Sec7 domain contains guanine-nucleotide exchange protein (GEP) activity, and the PH domain interacts with phospholipids and is responsible for association of PSCDs with membranes. Members of this family appear to mediate the regulation of protein sorting and membrane trafficking. The encoded protein exhibits GEP activity in vitro with ARF1, ARF3, and ARF6 and is 83% homologous to CYTH1. Two transcript variants encoding different isoforms have been found for this gene. [provided by RefSeq]

Other Designations

ARF exchange factor|ARF nucleotide-binding site opener|pleckstrin homology, Sec7 and coiled-coil domains 2 (cytohesin-2)|pleckstrin homology, Sec7 and coiled-coil domains 2-like|pleckstrin homology, Sec7 and coiled/coil domains 2 (cytohesin-2)

Publication Reference

- [Guanine nucleotide exchange factors of the cytohesin family and their roles in signal transduction.](#)

Kolanus W.

Immunological Reviews 2007 Aug; 218:102.