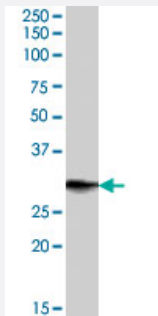


PRRX1 polyclonal antibody

Catalog # PAB7402 Size 100 ug

Applications



Western Blot (Tissue lysate)

PRRX1 polyclonal antibody (Cat # PAB7402) (1 ug/mL) staining of human heart lysate (35 ug protein in RIPA buffer). Primary incubation was 1 hour. Detected by chemiluminescence.

Specification

Product Description	Goat polyclonal antibody raised against synthetic peptide of PRRX1.
Immunogen	A synthetic peptide corresponding to human PRRX1.
Sequence	C-GSDTPQQDNDQ
Host	Goat
Theoretical MW (kDa)	24.4, 27.3
Reactivity	Human
Specificity	This antibody is expected to recognize both reported isoforms (NP_008833.1, NP_073207.1).
Form	Liquid
Purification	Antigen affinity purification
Concentration	0.5 mg/mL
Quality Control Testing	Antibody Reactive Against Synthetic Peptide.

Recommend Usage	ELISA (1:4000) Western Blot (1-3 ug/mL) The optimal working dilution should be determined by the end user.
Storage Buffer	In Tris saline, pH 7.3 (0.5% BSA, 0.02% sodium azide)
Storage Instruction	Store at -20°C. Aliquot to avoid repeated freezing and thawing.
Note	This product contains sodium azide: a POISONOUS AND HAZARDOUS SUBSTANCE which should be handled by trained staff only.

Applications

- Western Blot (Tissue lysate)

PRRX1 polyclonal antibody (Cat # PAB7402) (1 ug/mL) staining of human heart lysate (35 ug protein in RIPA buffer). Primary incubation was 1 hour. Detected by chemiluminescence.

- Enzyme-linked Immunoabsorbent Assay

Gene Info — PRRX1

Entrez GeneID	5396
Protein Accession#	NP_008833.1;NP_073207.1
Gene Name	PRRX1
Gene Alias	PHOX1, PMX1, PRX1
Gene Description	paired related homeobox 1
Omim ID	167420
Gene Ontology	Hyperlink
Gene Summary	The DNA-associated protein encoded by this gene is a member of the paired family of homeobox proteins localized to the nucleus. The protein functions as a transcription co-activator, enhancing the DNA-binding activity of serum response factor, a protein required for the induction of genes by growth and differentiation factors. The protein regulates muscle creatine kinase, indicating a role in the establishment of diverse mesodermal muscle types. Alternative splicing yields two isoforms that differ in abundance and expression patterns. [provided by RefSeq]
Other Designations	OTTHUMP00000033166 OTTHUMP00000033167 homeobox protein PHOX1 paired mesoderm homeobox 1 paired mesoderm homeobox 1 paired mesoderm homeobox 1 isoform pmx-1b

Publication Reference

- [The Transcription Factor Paired-Related Homeobox 1 \(Prrx1\) Inhibits Adipogenesis by Activating Transforming Growth Factor- \$\beta\$ \(TGF \$\beta\$ \) Signaling.](#)

Du B, Cawthorn WP, Su A, Doucette CR, Yao Y, Hemati N, Kampert S, McCain C, Broome DT, Rosen CJ, Yang G, MacDougald OA.

The Journal of Biological Chemistry 2013 Feb; 288(5):3036.

Application: WB-Tr, Mouse, 3T3-L1 cells

- [Human prx1 gene is a target of Nrf2 and is up-regulated by hypoxia/reoxygenation: implication to tumor biology.](#)

Kim YJ, Ahn JY, Liang P, Ip C, Zhang Y, Park YM.

Cancer Research 2007 Jan; 67(2):546.

Application: WB-Ce, Human, A-549 cells

Disease

- [Cleft Lip](#)
- [Cleft Palate](#)
- [Tooth Abnormalities](#)