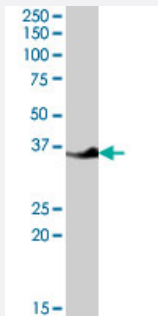


# LASP1 polyclonal antibody

Catalog # PAB7399      Size 100 ug

## Applications



### Western Blot (Tissue lysate)

LASP1 polyclonal antibody (Cat # PAB7399) (0.1 ug/mL) staining of human kidney lysate (35 ug protein in RIPA buffer). Primary incubation was 1 hour. Detected by chemiluminescence.

## Specification

<b>Product Description</b>	Goat polyclonal antibody raised against synthetic peptide of LASP1.
<b>Immunogen</b>	A synthetic peptide corresponding to human LASP1.
<b>Sequence</b>	C-PERRDSQDGSSYR
<b>Host</b>	Goat
<b>Theoretical MW (kDa)</b>	29.7
<b>Reactivity</b>	Human
<b>Form</b>	Liquid
<b>Purification</b>	Antigen affinity purification
<b>Concentration</b>	0.5 mg/mL
<b>Quality Control Testing</b>	Antibody Reactive Against Synthetic Peptide.
<b>Recommend Usage</b>	ELISA (1:32000) Western Blot (0.03-0.1 ug/mL) The optimal working dilution should be determined by the end user.

Storage Buffer	In Tris saline, pH 7.3 (0.5% BSA, 0.02% sodium azide)
Storage Instruction	Store at -20°C. Aliquot to avoid repeated freezing and thawing.
Note	This product contains sodium azide: a POISONOUS AND HAZARDOUS SUBSTANCE which should be handled by trained staff only.

## Applications

- Western Blot (Tissue lysate)

LASP1 polyclonal antibody (Cat # PAB7399) (0.1 ug/mL) staining of human kidney lysate (35 ug protein in RIPA buffer). Primary incubation was 1 hour. Detected by chemiluminescence.

- Enzyme-linked Immunoabsorbent Assay

## Gene Info — LASP1

Entrez GeneID	<a href="#">3927</a>
Protein Accession#	<a href="#">NP_006139.1</a>
Gene Name	LASP1
Gene Alias	Lasp-1, MLN50
Gene Description	LIM and SH3 protein 1
Omim ID	<a href="#">602920</a>
Gene Ontology	<a href="#">Hyperlink</a>
Gene Summary	This gene encodes a member of a LIM protein subfamily characterized by a LIM motif and a domain of Src homology region 3. The encoded protein functions as an actin-binding protein and possibly in cytoskeletal organization. [provided by RefSeq]
Other Designations	-

## Publication Reference

- [Silencing of LASP-1 influences zyxin localization, inhibits proliferation and reduces migration in breast cancer cells.](#)

Grunewald TG, Kammerer U, Schulze E, Schindler D, Honig A, Zimmer M, Butt E.

Experimental Cell Research 2006 Apr; 312(7):974.

Application: IF, IHC-P, WB-Tr, Human, BT-20 cells, Human breast cancer, HUVECs

## Disease

- [Autistic Disorder](#)
- [Genetic Predisposition to Disease](#)
- [Tobacco Use Disorder](#)