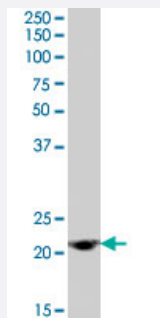


# ASF1A polyclonal antibody

Catalog # PAB7398      Size 100 ug

## Applications



### Western Blot (Cell lysate)

ASF1A polyclonal antibody (Cat # PAB7398) (1 ug/mL) staining of Jurkat cell lysate (35 ug protein in RIPA buffer). Primary incubation was 1 hour. Detected by chemiluminescence.

## Specification

**Product Description** Goat polyclonal antibody raised against synthetic peptide of ASF1A.

**Immunogen** A synthetic peptide corresponding to human ASF1A.

**Sequence** C-ENSLNVMLESH

**Host** Goat

**Theoretical MW (kDa)** 23

**Reactivity** Human

**Form** Liquid

**Purification** Antigen affinity purification

**Concentration** 0.5 mg/mL

**Quality Control Testing** Antibody Reactive Against Synthetic Peptide.

**Recommend Usage**  
ELISA (1:32000)  
Western Blot (1-3 ug/mL)  
The optimal working dilution should be determined by the end user.

<b>Storage Buffer</b>	In Tris saline, pH 7.3 (0.5% BSA, 0.02% sodium azide)
<b>Storage Instruction</b>	Store at -20°C. Aliquot to avoid repeated freezing and thawing.
<b>Note</b>	This product contains sodium azide: a POISONOUS AND HAZARDOUS SUBSTANCE which should be handled by trained staff only.

## Applications

- Western Blot (Cell lysate)

ASF1A polyclonal antibody (Cat # PAB7398) (1 ug/mL) staining of Jurkat cell lysate (35 ug protein in RIPA buffer). Primary incubation was 1 hour. Detected by chemiluminescence.

- Enzyme-linked Immunoabsorbent Assay

## Gene Info — ASF1A

<b>Entrez GeneID</b>	<a href="#">25842</a>
<b>Protein Accession#</b>	<a href="#">NP_054753.1</a>
<b>Gene Name</b>	ASF1A
<b>Gene Alias</b>	CGI-98, CIA, DKFZp547E2110, HSPC146
<b>Gene Description</b>	ASF1 anti-silencing function 1 homolog A (S. cerevisiae)
<b>Omim ID</b>	<a href="#">609189</a>
<b>Gene Ontology</b>	<a href="#">Hyperlink</a>
<b>Gene Summary</b>	This gene encodes a member of the H3/H4 family of histone chaperone proteins and is similar to the anti-silencing function-1 gene in yeast. The protein is a key component of a histone donor complex that functions in nucleosome assembly. It interacts with histones H3 and H4, and functions together with a chromatin assembly factor during DNA replication and repair. [provided by RefSeq]
<b>Other Designations</b>	ASF1 anti-silencing function 1 homolog A CCG1-interacting factor A anti-silencing function 1A

## Publication Reference

- [Human Asf1 regulates the flow of S phase histones during replicational stress.](#)

Groth A, Ray-Gallet D, Quivy JP, Lukas J, Bartek J, Almouzni G.

Molecular Cell 2005 Jan; 17(2):301.

Application: IP, Human, HeLa cells