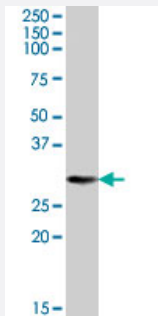


YWHAQ polyclonal antibody

Catalog # PAB7392

Size 100 ug

Applications



Western Blot (Tissue lysate)

YWHAQ polyclonal antibody (Cat # PAB7392) (0.03 ug/mL) staining of human brain (hippocampus) lysate (35 ug protein in RIPA buffer). Primary incubation was 1 hour. Detected by chemiluminescence.

Specification

Product Description Goat polyclonal antibody raised against synthetic peptide of YWHAQ.

Immunogen A synthetic peptide corresponding to human YWHAQ.

Sequence C-DDRKQTIDNSQ

Host Goat

Theoretical MW (kDa) 27.8

Reactivity Human

Form Liquid

Purification Antigen affinity purification

Concentration 0.5 mg/mL

Quality Control Testing Antibody Reactive Against Synthetic Peptide.

Recommend Usage
 ELISA (1:4000)
 Western Blot (0.03-0.1 ug/mL)
 The optimal working dilution should be determined by the end user.

Storage Buffer	In Tris saline, pH 7.3 (0.5% BSA, 0.02% sodium azide)
Storage Instruction	Store at -20°C. Aliquot to avoid repeated freezing and thawing.
Note	This product contains sodium azide: a POISONOUS AND HAZARDOUS SUBSTANCE which should be handled by trained staff only.

Applications

- Western Blot (Tissue lysate)

YWHAQ polyclonal antibody (Cat # PAB7392) (0.03 ug/mL) staining of human brain (hippocampus) lysate (35 ug protein in RIPA buffer). Primary incubation was 1 hour. Detected by chemiluminescence.

- Enzyme-linked Immunoabsorbent Assay

Gene Info — YWHAQ

Entrez GeneID	10971
Protein Accession#	NP_006817.1
Gene Name	YWHAQ
Gene Alias	14-3-3, 1C5, HS1
Gene Description	tyrosine 3-monooxygenase/tryptophan 5-monooxygenase activation protein, theta polypeptide
Omim ID	609009
Gene Ontology	Hyperlink

Gene Summary	This gene product belongs to the 14-3-3 family of proteins which mediate signal transduction by binding to phosphoserine-containing proteins. This highly conserved protein family is found in both plants and mammals, and this protein is 99% identical to the mouse and rat orthologs. This gene is upregulated in patients with amyotrophic lateral sclerosis. It contains in its 5' UTR a 6 bp tandem repeat sequence which is polymorphic, however, there is no correlation between the repeat number and the disease. [provided by RefSeq]
Other Designations	14-3-3 protein T-cell 14-3-3 protein tau 14-3-3 protein theta OTTHUMP00000015730 protein tau tyrosine 3/tryptophan 5 -monooxygenase activation protein, theta polypeptide

Publication Reference

- [Resistance exercise and insulin regulate AS160 and interaction with 14-3-3 in human skeletal muscle.](#)

Howlett KF, Sakamoto K, Garnham A, Cameron-Smith D, Hargreaves M.

Diabetes 2007 Jun; 56(6):1608.

Application: WB-Ti, Human, Human skeletal muscle

Pathway

- [Cell cycle](#)
- [Neurotrophin signaling pathway](#)
- [Pathogenic Escherichia coli infection - EHEC](#)

Disease

- [Breast cancer](#)
- [Breast Neoplasms](#)
- [Genetic Predisposition to Disease](#)