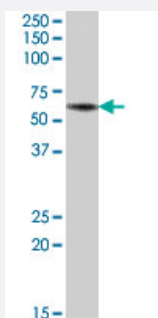


# BRUNOL5 polyclonal antibody

Catalog # PAB7367

Size 100 ug

## Applications



### Western Blot (Tissue lysate)

BRUNOL5 polyclonal antibody (Cat # PAB7367) (1 ug/mL) staining of human heart lysate (35 ug protein in RIPA buffer). Primary incubation was 1 hour. Detected by chemiluminescence.

## Specification

**Product Description** Goat polyclonal antibody raised against synthetic peptide of BRUNOL5.

**Immunogen** A synthetic peptide corresponding to human BRUNOL5.

**Sequence** C-EPPGGQPDGMKD

**Host** Goat

**Theoretical MW (kDa)** 52.4

**Reactivity** Human

**Form** Liquid

**Purification** Antigen affinity purification

**Concentration** 0.5 mg/mL

**Quality Control Testing** Antibody Reactive Against Synthetic Peptide.

**Recommend Usage**  
 ELISA (1:1000)  
 Western Blot (1-3 ug/mL)  
 The optimal working dilution should be determined by the end user.

Storage Buffer	In Tris saline, pH 7.3 (0.5% BSA, 0.02% sodium azide)
Storage Instruction	Store at -20°C. Aliquot to avoid repeated freezing and thawing.
Note	This product contains sodium azide: a POISONOUS AND HAZARDOUS SUBSTANCE which should be handled by trained staff only.

## Applications

- Western Blot (Tissue lysate)

BRUNOL5 polyclonal antibody (Cat # PAB7367) (1 ug/mL) staining of human heart lysate (35 ug protein in RIPA buffer). Primary incubation was 1 hour. Detected by chemiluminescence.

- Enzyme-linked Immunoabsorbent Assay

## Gene Info — BRUNOL5

Entrez GeneID	<a href="#">60680</a>
Protein Accession#	<a href="#">NP_068757.2</a>
Gene Name	BRUNOL5
Gene Alias	BRUNOL-5, CELF5
Gene Description	bruno-like 5, RNA binding protein (Drosophila)
Gene Ontology	<a href="#">Hyperlink</a>
Gene Summary	Members of the CELF/BRUNOL protein family contain two N-terminal RNA recognition motif (RRM) domains, one C-terminal RRM domain, and a divergent segment of 160-230 aa between the second and third RRM domains. Members of this protein family regulate pre-mRNA alternative splicing and may also be involved in mRNA editing, and translation. [provided by RefSeq]
Other Designations	Bruno -like 5, RNA binding protein CUG-BP and ETR-3 like factor 5 RNA-binding protein BRUNOL-5 bruno-like 5, RNA binding protein

## Publication Reference

- [The CELF family of RNA binding proteins is implicated in cell-specific and developmentally regulated alternative splicing.](#)

Ladd AN, Charlet N, Cooper TA.

Molecular and Cellular Biology 2001 Feb; 21(4):1285.