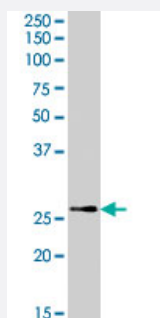


# TPD52L1 polyclonal antibody

Catalog # PAB7361

Size 100 ug

## Applications



### Western Blot (Tissue lysate)

TPD52L1 polyclonal antibody (Cat # PAB7361) (0.1 ug/mL) staining of human breast cancer lysate (35 ug protein in RIPA buffer). Primary incubation was 1 hour. Detected by chemiluminescence.

## Specification

<b>Product Description</b>	Goat polyclonal antibody raised against synthetic peptide of TPD52L1.
<b>Immunogen</b>	A synthetic peptide corresponding to human TPD52L1.
<b>Sequence</b>	C-EPLQGTDEDAVASAD
<b>Host</b>	Goat
<b>Theoretical MW (kDa)</b>	22.5, 16.2, 14.7
<b>Reactivity</b>	Human
<b>Specificity</b>	This antibody is expected to recognize isoforms 1, 3 and 4 (NP_003278.1, NP_001003396.1 and NP_001003397.1 resp.).
<b>Form</b>	Liquid
<b>Purification</b>	Antigen affinity purification
<b>Concentration</b>	0.5 mg/mL
<b>Quality Control Testing</b>	Antibody Reactive Against Synthetic Peptide.

<b>Recommend Usage</b>	ELISA (1:8000) Western Blot (0.1-0.3 ug/mL) The optimal working dilution should be determined by the end user.
<b>Storage Buffer</b>	In Tris saline, pH 7.3 (0.5% BSA, 0.02% sodium azide)
<b>Storage Instruction</b>	Store at -20°C. Aliquot to avoid repeated freezing and thawing.
<b>Note</b>	This product contains sodium azide: a POISONOUS AND HAZARDOUS SUBSTANCE which should be handled by trained staff only.

## Applications

- Western Blot (Tissue lysate)

TPD52L1 polyclonal antibody (Cat # PAB7361) (0.1 ug/mL) staining of human breast cancer lysate (35 ug protein in RIPA buffer). Primary incubation was 1 hour. Detected by chemiluminescence.

- Enzyme-linked Immunoabsorbent Assay

## Gene Info — TPD52L1

<b>Entrez GeneID</b>	<a href="#">7164</a>
<b>Protein Accession#</b>	<a href="#">NP_003278.1;NP_001003395.1;NP_001003396.1;NP_001003397.1</a>
<b>Gene Name</b>	TPD52L1
<b>Gene Alias</b>	D53, MGC8556, TPD52L2, hD53
<b>Gene Description</b>	tumor protein D52-like 1
<b>Omim ID</b>	<a href="#">604069</a>
<b>Gene Ontology</b>	<a href="#">Hyperlink</a>
<b>Gene Summary</b>	This gene encodes a member of the tumor protein D52 (TPD52) family. The encoded protein contains a coiled-coil domain and may form homo- or hetero-dimer with TPD52 family members. The protein is reported to be involved in cell proliferation and calcium signaling. It also interacts with the mitogen-activated protein kinase kinase kinase 5 (MAP3K5/ASK1) and positively regulates MAP3K5-induced apoptosis. Multiple alternatively spliced transcript variants have been observed, but the full-length nature of some variants has not yet been determined. [provided by RefSeq]
<b>Other Designations</b>	OTTHUMP00000017133 OTTHUMP00000017135 OTTHUMP00000017136 tumor protein D52-like 2 tumor protein D53

## Publication Reference

- [Alternative splicing as a mechanism for regulating 14-3-3 binding: interactions between hD53 \(TPD52L1\) and 14-3-3 proteins.](#)

Boutros R, Bailey AM, Wilson SH, Byrne JA.

Journal of Molecular Biology 2003 Sep; 332(3):675.