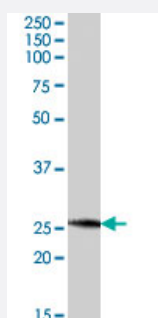


NRTN polyclonal antibody

Catalog # PAB7328 Size 100 ug

Applications



Western Blot (Tissue lysate)

NRTN polyclonal antibody (Cat # PAB7328) (0.1 ug/mL) staining of human heart lysate (35 ug protein in RIPA buffer). Primary incubation was 1 hour. Detected by chemiluminescence.

Specification

Product Description Goat polyclonal antibody raised against synthetic peptide of NRTN.

Immunogen A synthetic peptide corresponding to human NRTN.

Sequence C-DAHSRYHTVHELARE

Host Goat

Theoretical MW (kDa) 22.4

Reactivity Human, Mouse

Form Liquid

Purification Antigen affinity purification

Concentration 0.5 mg/mL

Quality Control Testing Antibody Reactive Against Synthetic Peptide.

Recommend Usage
 ELISA (1:64000)
 Western Blot (0.1-0.3 ug/mL)
 The optimal working dilution should be determined by the end user.

Storage Buffer	In Tris saline, pH 7.3 (0.5% BSA, 0.02% sodium azide)
Storage Instruction	Store at -20°C. Aliquot to avoid repeated freezing and thawing.
Note	This product contains sodium azide: a POISONOUS AND HAZARDOUS SUBSTANCE which should be handled by trained staff only.

Applications

- Western Blot (Tissue lysate)

NRTN polyclonal antibody (Cat # PAB7328) (0.1 ug/mL) staining of human heart lysate (35 ug protein in RIPA buffer). Primary incubation was 1 hour. Detected by chemiluminescence.

- Enzyme-linked Immunoabsorbent Assay

Gene Info — NRTN

Entrez GeneID	4902
Protein Accession#	NP_004549.1
Gene Name	NRTN
Gene Alias	NTN
Gene Description	neurturin
Omim ID	142623 602018
Gene Ontology	Hyperlink
Gene Summary	Neurturin is a member of the TGF-beta subfamily, TRN. This gene signals through RET and a GPI-linked coreceptor, and promotes survival of neuronal populations. A neurturin mutation has been described in a family with Hirschsprung Disease. [provided by RefSeq]
Other Designations	-

Publication Reference

- [Transplantation of bone marrow stromal cells containing the neurturin gene in rat model of Parkinson's disease.](#)

Ye M, Wang XJ, Zhang YH, Lu GQ, Liang L, Xu JY, Chen SD.

Brain Research 2007 Apr; 1142:206.

Application: IF, WB-Tr, Rat, BMSC

Disease

- [Genetic Predisposition to Disease](#)
- [Hirschsprung Disease](#)