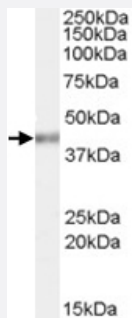


PCBP4 polyclonal antibody

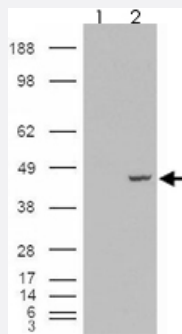
Catalog # PAB7325 Size 100 ug

Applications



Western Blot (Cell lysate)

PCBP4 polyclonal antibody (Cat # PAB7325) (0.03 ug/mL) staining of HeLa cell lysate (35 ug protein in RIPA buffer). Primary incubation was 1 hour. Detected by chemiluminescence.



Western Blot (Transfected lysate)

293 overexpressing PCBP4 and probed with PCBP4 polyclonal antibody (Cat # PAB7325) (mock transfection in first lane), tested by Origene.

Specification

Product Description	Goat polyclonal antibody raised against synthetic peptide of PCBP4.
Immunogen	A synthetic peptide corresponding to human PCBP4.
Sequence	C-NGSKKAERQKFSPY
Host	Goat
Theoretical MW (kDa)	43.9, 37.9, 41.5, 41
Reactivity	Human

Specificity	This antibody is expected to recognize all reported isoforms (NP_065151.1, NP_127501.1, NP_127502.1 and NP_12750.3.1).
Form	Liquid
Purification	Antigen affinity purification
Concentration	0.5 mg/mL
Quality Control Testing	Antibody Reactive Against Synthetic Peptide.
Recommend Usage	ELISA (1:128000) Western Blot (1~3 ug/mL) The optimal working dilution should be determined by the end user.
Storage Buffer	In Tris saline, pH 7.3 (0.5% BSA, 0.02% sodium azide)
Storage Instruction	Store at -20°C. Aliquot to avoid repeated freezing and thawing.
Note	This product contains sodium azide: a POISONOUS AND HAZARDOUS SUBSTANCE which should be handled by trained staff only.

Applications

- Western Blot (Cell lysate)

PCBP4 polyclonal antibody (Cat # PAB7325) (0.03 ug/mL) staining of HeLa cell lysate (35 ug protein in RIPA buffer). Primary incubation was 1 hour. Detected by chemiluminescence.

- Western Blot (Transfected lysate)

293 overexpressing PCBP4 and probed with PCBP4 polyclonal antibody (Cat # PAB7325) (mock transfection in first lane), tested by Origene.

- Enzyme-linked Immunoabsorbent Assay

Gene Info — PCBP4

Entrez GeneID	57060
Protein Accession#	NP_065151.1;NP_127501.1;NP_127502.1;NP_12750.3.1
Gene Name	PCBP4
Gene Alias	LIP4, MCG10

Gene Description	poly(rC) binding protein 4
Omim ID	608503
Gene Ontology	Hyperlink
Gene Summary	This gene encodes a member of the KH-domain protein subfamily. Proteins of this subfamily, also referred to as alpha-CPs, bind to RNA with a specificity for C-rich pyrimidine regions. Alpha-CPs play important roles in post-transcriptional activities and have different cellular distributions. This gene is induced by the p53 tumor suppressor, and the encoded protein can suppress cell proliferation by inducing apoptosis and cell cycle arrest in G(2)-M. This gene's protein is found in the cytoplasm, yet it lacks the nuclear localization signals found in other subfamily members. Multiple alternatively spliced transcript variants have been described, but the full-length nature for only some has been determined. [provided by RefSeq]
Other Designations	LYST-interacting protein RNA binding protein MCG10 alphaCP-4 protein

Publication Reference

- [Alpha CP-4, encoded by a putative tumor suppressor gene at 3p21, but not its alternative splice variant alpha CP-4a, is underexpressed in lung cancer.](#)

Pio R, Zudaire I, Pino I, Castano Z, Zabalegui N, Vicent S, Garcia-Amigot F, Otero MD, Lozano MD, Garcia-Foncillas J, Calasanz MJ, Montuenga LM.

Cancer Research 2004 Jun; 64(12):4171.

Application: IHC-P, Human, Human lung cancer

Disease

- [Cardiovascular Diseases](#)
- [Diabetes Mellitus](#)
- [Edema](#)