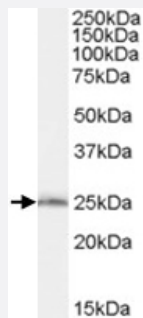


SAR1B polyclonal antibody

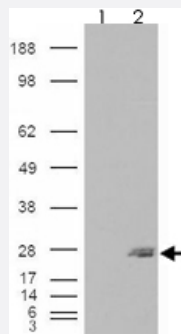
Catalog # PAB7320 Size 100 ug

Applications



Western Blot (Tissue lysate)

SAR1B polyclonal antibody (Cat # PAB7320) (0.03 ug/mL) staining of mouse liver lysate (35 ug protein in RIPA buffer). Primary incubation was 1 hour. Detected by chemiluminescence.



Western Blot (Transfected lysate)

293 overexpressing SAR1B and probed with SAR1B polyclonal antibody (Cat # PAB7320) (mock transfection in first lane), tested by Origene.

Specification

Product Description	Goat polyclonal antibody raised against synthetic peptide of SAR1B.
Immunogen	A synthetic peptide corresponding to human SAR1B.
Sequence	C-DHERLLESKEELD
Host	Goat
Theoretical MW (kDa)	22.4, 22.4
Reactivity	Mouse, Rat
Specificity	Both reported variants (NP_001028675.1 and NP_057187.1) represent identical protein.

Form	Liquid
Purification	Antigen affinity purification
Concentration	0.5 mg/mL
Quality Control Testing	Antibody Reactive Against Synthetic Peptide.
Recommend Usage	ELISA (1:8000) Western Blot (0.03-0.1 ug/mL) The optimal working dilution should be determined by the end user.
Storage Buffer	In Tris saline, pH 7.3 (0.5% BSA, 0.02% sodium azide)
Storage Instruction	Store at -20°C. Aliquot to avoid repeated freezing and thawing.
Note	This product contains sodium azide: a POISONOUS AND HAZARDOUS SUBSTANCE which should be handled by trained staff only.

Applications

- Western Blot (Tissue lysate)

SAR1B polyclonal antibody (Cat # PAB7320) (0.03 ug/mL) staining of mouse liver lysate (35 ug protein in RIPA buffer). Primary incubation was 1 hour. Detected by chemiluminescence.

- Western Blot (Transfected lysate)

293 overexpressing SAR1B and probed with SAR1B polyclonal antibody (Cat # PAB7320) (mock transfection in first lane), tested by Origene.

- Enzyme-linked Immunoabsorbent Assay

Gene Info — SAR1B

Entrez GeneID	51128
Protein Accession#	NP_001028675.1;NP_057187.1
Gene Name	SAR1B
Gene Alias	CMRD, GTBPB, SARA2
Gene Description	SAR1 homolog B (S. cerevisiae)
Omim ID	246700 607689 607690

Gene Ontology

[Hyperlink](#)

Other Designations

2310075M17Rik|GTP-binding protein Sara|SAR1 gene homolog B|SAR1a gene homolog 2

Publication Reference

- [Tissue-specific stable isotope measurements of postprandial lipid metabolism in familial combined hyperlipidaemia.](#)

Evans K, Burdge GC, Wootton SA, Collins JM, Clark ML, Tan GD, Karpe F, Frayn KN.

Atherosclerosis 2008 Mar; 197(1):164.