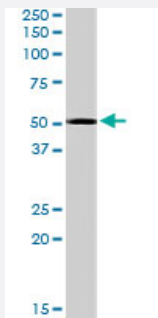


DDX19A/DDX19B polyclonal antibody

Catalog # PAB7319

Size 100 ug

Applications



Western Blot (Cell lysate)

The DDX19A/DDX19B polyclonal antibody (Cat # PAB7319) (0.5 ug/mL) staining of K-562 cell lysate (35 ug protein in RIPA buffer). Primary incubation was 1 hour. Detected by chemiluminescence.

Specification

Product Description	Goat polyclonal antibody raised against synthetic peptide of DDX19A/DDX19B.
Immunogen	A synthetic peptide corresponding to human DDX19A/DDX19B.
Sequence	C-DLPVDKDGNDNETY
Host	Goat
Theoretical MW (kDa)	53.9, 50.5, 41.8, 54
Reactivity	Human
Specificity	This antibody is expected to recognize DDX19A (NP_060802.1) and all reported isoforms of DDX19B (NP_009173.1, NP_001014451.1 and NP_001014449.1).
Form	Liquid
Purification	Antigen affinity purification
Concentration	0.5 mg/mL
Quality Control Testing	Antibody Reactive Against Synthetic Peptide.

Recommend Usage	ELISA (1:4000) Western Blot (0.5-1.5 ug/mL) The optimal working dilution should be determined by the end user.
Storage Buffer	In Tris saline, pH 7.3 (0.5% BSA, 0.02% sodium azide)
Storage Instruction	Store at -20°C. Aliquot to avoid repeated freezing and thawing.
Note	This product contains sodium azide: a POISONOUS AND HAZARDOUS SUBSTANCE which should be handled by trained staff only.

Applications

- Western Blot (Cell lysate)

The DDX19A/DDX19B polyclonal antibody (Cat # PAB7319) (0.5 ug/mL) staining of K-562 cell lysate (35 ug protein in RIPA buffer). Primary incubation was 1 hour. Detected by chemiluminescence.

- Enzyme-linked Immunoabsorbent Assay

Gene Info — DDX19B

Entrez GeneID	11269
Protein Accession#	NP_009173.1 (Gene ID : 11269);NP_060802.1 (Gene ID : 55308);NP_001014451.1 (Gene ID : 11269);NP_001014451.1 (Gene ID : 11269);NP_001014449.1 (Gene ID : 11269)
Gene Name	DDX19B
Gene Alias	DBP5, DDX19, RNAh
Gene Description	DEAD (Asp-Glu-Ala-As) box polypeptide 19B
Omim ID	605812
Gene Ontology	Hyperlink

Gene Summary

DEAD box proteins, characterized by the conserved motif Asp-Glu-Ala-Asp (DEAD), are putative RNA helicases. They are implicated in a number of cellular processes involving alteration of RNA secondary structure such as translation initiation, nuclear and mitochondrial splicing, and ribosome and spliceosome assembly. Based on their distribution patterns, some members of this family are believed to be involved in embryogenesis, spermatogenesis, and cellular growth and division. This gene encodes a DEAD box protein, which exhibits RNA-dependent ATPase and ATP-dependent RNA-unwinding activities. This protein is recruited to the cytoplasmic fibrils of the nuclear pore complex, where it participates in the export of mRNA from the nucleus. Multiple alternatively spliced transcript variants encoding different isoforms have been found for this gene. [provided by RefSeq]

Other Designations

ATP-dependent RNA helicase DDX19|DEAD (Asp-Glu-Ala-As) box polypeptide 19|DEAD-box RNA helicase DEAD5|DEAD-box protein 5|DEAD/H (Asp-Glu-Ala-Asp/His) box polypeptide 19 (Dbp5, yeast, homolog)|yeast Dbp5 homolog

Gene Info — DDX19A

Entrez GeneID

[55308](#)

Protein Accession#

[NP_009173.1 \(Gene ID : 11269\)](#);[NP_060802.1 \(Gene ID : 55308\)](#);[NP_001014451.1 \(Gene ID : 11269\)](#);[NP_001014451.1 \(Gene ID : 11269\)](#);[NP_001014449.1 \(Gene ID : 11269\)](#)

Gene Name

DDX19A

Gene Alias

DDX19-DDX19L, DDX19L, DKFZp686C21137, FLJ11126

Gene Description

DEAD (Asp-Glu-Ala-As) box polypeptide 19A

Gene Ontology

[Hyperlink](#)

Other Designations

DDX19-like protein|DEAD (Asp-Glu-Ala-As) box polypeptide 19-like|RNA helicase

Publication Reference

- [Transport of messenger RNA from the nucleus to the cytoplasm.](#)

Cole CN, Scarcelli JJ.

Current Opinion in Cell Biology 2006 Jun; 18(3):299.