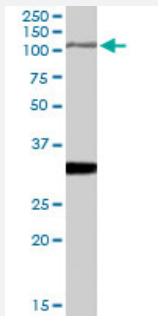


Ide polyclonal antibody

Catalog # PAB7318

Size 100 ug

Applications



Western Blot (Tissue lysate)

The Ide polyclonal antibody (Cat # PAB7318) (1 ug/mL) staining of mouse brain lysate (35 ug protein in RIPA buffer). Primary incubation was 1 hour. Detected by chemiluminescence.

Specification

Product Description Goat polyclonal antibody raised against synthetic peptide of Ide.

Immunogen A synthetic peptide corresponding to mouse Ide.

Sequence C-QQYNYDRDNIE

Host Goat

Theoretical MW (kDa) 118

Reactivity Mouse, Rat

Form Liquid

Purification Antigen affinity purification

Concentration 0.5 mg/mL

Quality Control Testing Antibody Reactive Against Synthetic Peptide.

Recommend Usage
 ELISA (1:16000)
 Western Blot (1-3 ug/mL)
 The optimal working dilution should be determined by the end user.

Storage Buffer	In Tris saline, pH 7.3 (0.5% BSA, 0.02% sodium azide)
Storage Instruction	Store at -20°C. Aliquot to avoid repeated freezing and thawing.
Note	This product contains sodium azide: a POISONOUS AND HAZARDOUS SUBSTANCE which should be handled by trained staff only.

Applications

- Western Blot (Tissue lysate)

The Ide polyclonal antibody (Cat # PAB7318) (1 ug/mL) staining of mouse brain lysate (35 ug protein in RIPA buffer). Primary incubation was 1 hour. Detected by chemiluminescence.

- Enzyme-linked Immunoabsorbent Assay

Gene Info — Ide

Entrez GeneID	15925
Protein Accession#	NP_112419.2
Gene Name	Ide
Gene Alias	1300012G03Rik, 4833415K22Rik, AA675336, AI507533
Gene Description	insulin degrading enzyme
Gene Ontology	Hyperlink
Other Designations	-

Publication Reference

- [Insulin degrading enzyme activity selectively decreases in the hippocampal formation of cases at high risk to develop Alzheimer's disease.](#)

Zhao Z, Xiang Z, Haroutunian V, Buxbaum JD, Stetka B, Pasinetti GM.

Neurobiology of Aging 2007 Jun; 28(6):824.

Application: WB-Ti, Human, Hippocampal formation, Occipital cortex