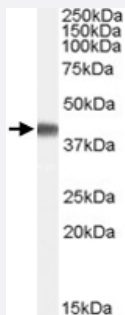


# PPID polyclonal antibody

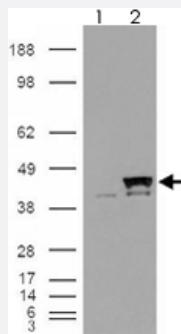
Catalog # PAB7312      Size 100 ug

## Applications



### Western Blot (Tissue lysate)

PPID polyclonal antibody (Cat # PAB7312) (0.1 ug/mL) staining of human brain (frontal cortex) lysate (35 ug protein in RIPA buffer). Primary incubation was 1 hour. Detected by chemiluminescence.



### Western Blot (Transfected lysate)

293 overexpressing PPID and probed with PPID polyclonal antibody (Cat # PAB7312) (mock transfection in first lane), tested by Origene.

## Specification

Product Description	Goat polyclonal antibody raised against synthetic peptide of PPID.
Immunogen	A synthetic peptide corresponding to human PPID.
Sequence	C-DENFHYKHDREG
Host	Goat
Theoretical MW (kDa)	40.8
Reactivity	Human
Form	Liquid

Purification	Antigen affinity purification
Concentration	0.5 mg/mL
Quality Control Testing	Antibody Reactive Against Synthetic Peptide.
Recommend Usage	ELISA (1:64000) Western Blot (0.1-0.3 ug/mL) The optimal working dilution should be determined by the end user.
Storage Buffer	In Tris saline, pH 7.3 (0.5% BSA, 0.02% sodium azide)
Storage Instruction	Store at -20°C. Aliquot to avoid repeated freezing and thawing.
Note	This product contains sodium azide: a POISONOUS AND HAZARDOUS SUBSTANCE which should be handled by trained staff only.

## Applications

- Western Blot (Tissue lysate)

PPID polyclonal antibody (Cat # PAB7312) (0.1 ug/mL) staining of human brain (frontal cortex) lysate (35 ug protein in RIPA buffer). Primary incubation was 1 hour. Detected by chemiluminescence.

- Western Blot (Transfected lysate)

293 overexpressing PPID and probed with PPID polyclonal antibody (Cat # PAB7312) (mock transfection in first lane), tested by Origene.

- Enzyme-linked Immunoabsorbent Assay

## Gene Info — PPID

Entrez GeneID	<a href="#">5481</a>
Protein Accession#	<a href="#">NP_005029.1</a>
Gene Name	PPID
Gene Alias	CYP-40, CYPD, MGC33096
Gene Description	peptidylprolyl isomerase D
Omim ID	<a href="#">601753</a>
Gene Ontology	<a href="#">Hyperlink</a>

**Gene Summary**

The protein encoded by this gene is a member of the peptidyl-prolyl cis-trans isomerase (PPIase) family. PPIases catalyze the cis-trans isomerization of proline imidic peptide bonds in oligopeptides and accelerate the folding of proteins. This protein has been shown to possess PPIase activity and, similar to other family members, can bind to the immunosuppressant cyclosporin A. [provided by RefSeq]

**Other Designations**

40 kDa peptidyl-prolyl cis-trans isomerase D|PPIase|cyclophilin 40|cyclophilin D|cyclophilin-related protein|rotamase

## Publication Reference

- [Cyclophilin D inactivation protects axons in experimental autoimmune encephalomyelitis, an animal model of multiple sclerosis.](#)

Forte M, Gold BG, Marracci G, Chaudhary P, Basso E, Johnsen D, Yu X, Fowlkes J, Rahder M, Stem K, Bernardi P, Bourdette D.

PNAS 2007 May; 104(18):7558.

## Pathway

- [Calcium signaling pathway](#)