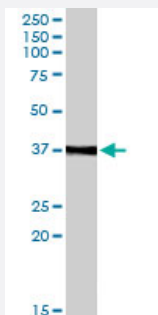


Ogg1 polyclonal antibody

Catalog # PAB7311 Size 100 ug

Applications



Western Blot (Tissue lysate)

The Ogg1 polyclonal antibody (Cat # PAB7311) (0.1 ug/mL) staining of rat spleen lysate (35 ug protein in RIPA buffer). Primary incubation was 1 hour. Detected by chemiluminescence.

Specification

Product Description Goat polyclonal antibody raised against synthetic peptide of Ogg1.

Immunogen A synthetic peptide corresponding to mouse Ogg1.

Sequence C-HPKTSQAKGPSPLANK

Host Goat

Theoretical MW (kDa) 38.8, 45.8, 47.2, 39

Reactivity Rat

Form Liquid

Purification Antigen affinity purification

Concentration 0.5 mg/mL

Quality Control Testing Antibody Reactive Against Synthetic Peptide.

Recommend Usage
 ELISA (1:128000)
 Western Blot (0.1-0.3 ug/mL)
 The optimal working dilution should be determined by the end user.

Storage Buffer	In Tris saline, pH 7.3 (0.5% BSA, 0.02% sodium azide)
Storage Instruction	Store at -20°C. Aliquot to avoid repeated freezing and thawing.
Note	This product contains sodium azide: a POISONOUS AND HAZARDOUS SUBSTANCE which should be handled by trained staff only.

Applications

- Western Blot (Tissue lysate)

The Ogg1 polyclonal antibody (Cat # PAB7311) (0.1 ug/mL) staining of rat spleen lysate (35 ug protein in RIPA buffer). Primary incubation was 1 hour. Detected by chemiluminescence.

- Enzyme-linked Immunoabsorbent Assay

Gene Info — Ogg1

Entrez GeneID	18294
Protein Accession#	NP_0.35087.2
Gene Name	Ogg1
Gene Alias	Mmh
Gene Description	8-oxoguanine DNA-glycosylase 1
Gene Ontology	Hyperlink
Other Designations	OTTMUSP00000025541

Publication Reference

- [OGG1 initiates age-dependent CAG trinucleotide expansion in somatic cells.](#)

Kovtun IV, Liu Y, Bjoras M, Klungland A, Wilson SH, McMurray CT.

Nature 2007 May; 447(7143):447.