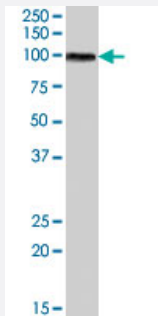


TGM2 polyclonal antibody

Catalog # PAB7291 Size 100 ug

Applications



Western Blot (Tissue lysate)

TGM2 polyclonal antibody (Cat # PAB7291) (0.03 ug/mL) staining of human lung lysate (35 ug protein in RIPA buffer). Primary incubation was 1 hour. Detected by chemiluminescence.

Specification

Product Description	Goat polyclonal antibody raised against synthetic peptide of TGM2.
Immunogen	A synthetic peptide corresponding to human TGM2.
Sequence	C-NFESDKLKAVKGFR
Host	Goat
Theoretical MW (kDa)	77.3
Reactivity	Human
Specificity	This antibody is expected to recognize isoform a (NP_004604.2) only.
Form	Liquid
Purification	Antigen affinity purification
Concentration	0.5 mg/mL
Quality Control Testing	Antibody Reactive Against Synthetic Peptide.

Recommend Usage	ELISA (1:128000) Western Blot (0.03-0.1 ug/mL) The optimal working dilution should be determined by the end user.
Storage Buffer	In Tris saline, pH 7.3 (0.5% BSA, 0.02% sodium azide)
Storage Instruction	Store at -20°C. Aliquot to avoid repeated freezing and thawing.
Note	This product contains sodium azide: a POISONOUS AND HAZARDOUS SUBSTANCE which should be handled by trained staff only.

Applications

- Western Blot (Tissue lysate)

TGM2 polyclonal antibody (Cat # PAB7291) (0.03 ug/mL) staining of human lung lysate (35 ug protein in RIPA buffer). Primary incubation was 1 hour. Detected by chemiluminescence.

- Enzyme-linked Immunoabsorbent Assay

Gene Info — TGM2

Entrez GeneID	7052
Protein Accession#	NP_004604.2
Gene Name	TGM2
Gene Alias	G-ALPHA-h, GNAH, TG2, TGC
Gene Description	transglutaminase 2 (C polypeptide, protein-glutamine-gamma-glutamyltransferase)
Omim ID	190196
Gene Ontology	Hyperlink
Gene Summary	Transglutaminases are enzymes that catalyze the crosslinking of proteins by epsilon-gamma glutamyl lysine isopeptide bonds. While the primary structure of transglutaminases is not conserved, they all have the same amino acid sequence at their active sites and their activity is calcium-dependent. The protein encoded by this gene acts as a monomer, is induced by retinoic acid, and appears to be involved in apoptosis. Finally, the encoded protein is the autoantigen implicated in celiac disease. Two transcript variants encoding different isoforms have been found for this gene. [provided by RefSeq]
Other Designations	C polypeptide OTTHUMP00000030960 TGase C TGase-H protein-glutamine-gamma-glutamyltransferase tissue transglutaminase transglutaminase 2 transglutaminase C

Publication Reference

- [Increased expression of tissue transglutaminase in pancreatic ductal adenocarcinoma and its implications in drug resistance and metastasis.](#)

Verma A, Wang H, Manavathi B, Fok JY, Mann AP, Kumar R, Mehta K.

Cancer Research 2006 Nov; 66(21):10525.

Application: IF, IHC, IP, WB, Human, BxPC-3, Panc-28 cells, Pancreatic ductal adenocarcinoma cell lines

Disease

- [Celiac Disease](#)
- [Diabetes Mellitus](#)
- [Exfoliation Syndrome](#)
- [Genetic Predisposition to Disease](#)
- [Glaucoma](#)
- [Schizophrenia](#)