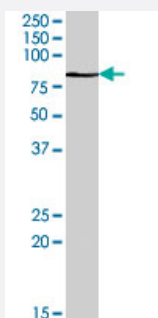


# GAB2 polyclonal antibody

Catalog # PAB7265      Size 100 ug

## Applications



### Western Blot (Cell lysate)

GAB2 polyclonal antibody (Cat # PAB7265) (0.5 ug/mL) staining of K-562 cell lysate (35 ug protein in RIPA buffer). Primary incubation was 1 hour. Detected by chemiluminescence.

## Specification

<b>Product Description</b>	Goat polyclonal antibody raised against synthetic peptide of GAB2.
<b>Immunogen</b>	A synthetic peptide corresponding to human GAB2.
<b>Sequence</b>	C-QVDKEKTQALQN
<b>Host</b>	Goat
<b>Theoretical MW (kDa)</b>	74.5, 70
<b>Reactivity</b>	Human
<b>Specificity</b>	This antibody is expected to recognize both reported isoforms (NP_536739.1, NP_0.36428.1).
<b>Form</b>	Liquid
<b>Purification</b>	Antigen affinity purification
<b>Concentration</b>	0.5 mg/mL
<b>Quality Control Testing</b>	Antibody Reactive Against Synthetic Peptide.

<b>Recommend Usage</b>	ELISA (1:64000) Western Blot (0.5-1.5 ug/mL) The optimal working dilution should be determined by the end user.
<b>Storage Buffer</b>	In Tris saline, pH 7.3 (0.5% BSA, 0.02% sodium azide)
<b>Storage Instruction</b>	Store at -20°C. Aliquot to avoid repeated freezing and thawing.
<b>Note</b>	This product contains sodium azide: a POISONOUS AND HAZARDOUS SUBSTANCE which should be handled by trained staff only.

## Applications

- Western Blot (Cell lysate)

GAB2 polyclonal antibody (Cat # PAB7265) (0.5 ug/mL) staining of K-562 cell lysate (35 ug protein in RIPA buffer). Primary incubation was 1 hour. Detected by chemiluminescence.

- Enzyme-linked Immunoabsorbent Assay

## Gene Info — GAB2

<b>Entrez GeneID</b>	<a href="#">9846</a>
<b>Protein Accession#</b>	<a href="#">NP_536739.1;NP_036428.1</a>
<b>Gene Name</b>	GAB2
<b>Gene Alias</b>	KIAA0571
<b>Gene Description</b>	GRB2-associated binding protein 2
<b>Omim ID</b>	<a href="#">606203</a>
<b>Gene Ontology</b>	<a href="#">Hyperlink</a>
<b>Gene Summary</b>	This gene is a member of the GRB2-associated binding protein (GAB) gene family and is similar to the GAB1 gene. These proteins contain pleckstrin homology (PH) domain, and bind SHP2 tyrosine phosphatase and GRB2 adapter protein. They act as adapters for transmitting various signals in response to stimuli through cytokine and growth factor receptors, and T- and B-cell antigen receptors. The protein encoded by this gene is the principal activator of phosphatidylinositol-3 kinase in response to activation of the high affinity IgE receptor. Two alternatively spliced transcripts encoding different isoforms have been described for this gene. [provided by RefSeq]
<b>Other Designations</b>	Grb2-associated binder 2

## Publication Reference

- [A role for the scaffolding adapter GAB2 in breast cancer.](#)

Bentires-Alj M, Gil SG, Chan R, Wang ZC, Wang Y, Imanaka N, Harris LN, Richardson A, Neel BG, Gu H.

Nature Medicine 2006 Jan; 12(1):114.

Application: IHC, WB-Tr, Human, HEK 293T, MCF-10A cells

## Pathway

- [Chronic myeloid leukemia](#)
- [Fc epsilon RI signaling pathway](#)
- [Fc gamma R-mediated phagocytosis](#)

## Disease

- [Alzheimer disease](#)
- [Cardiovascular Diseases](#)
- [Cognition](#)
- [Diabetes Mellitus](#)
- [Edema](#)
- [Genetic Predisposition to Disease](#)
- [Obesity](#)
- [Psychiatric Status Rating Scales](#)