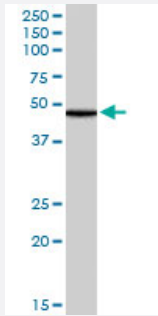


Plin3 polyclonal antibody

Catalog # PAB7251 Size 100 ug

Applications



Western Blot (Tissue lysate)

The Plin3 polyclonal antibody (Cat # PAB7251) (0.1 ug/mL) staining of rat skin lysate (35 ug protein in RIPA buffer). Primary incubation was 1 hour. Detected by chemiluminescence.

Specification

Product Description Goat polyclonal antibody raised against synthetic peptide of Plin3.

Immunogen A synthetic peptide corresponding to mouse Plin3.

Sequence C-NQKTPQDAEKDPAK

Host Goat

Theoretical MW (kDa) 47.3

Reactivity Rat

Form Liquid

Purification Antigen affinity purification

Concentration 0.5 mg/mL

Quality Control Testing Antibody Reactive Against Synthetic Peptide.

Recommend Usage
 ELISA (1:16000)
 Western Blot (1-3 ug/mL)
 The optimal working dilution should be determined by the end user.

Storage Buffer	In Tris saline, pH 7.3 (0.5% BSA, 0.02% sodium azide)
Storage Instruction	Store at -20°C. Aliquot to avoid repeated freezing and thawing.
Note	This product contains sodium azide: a POISONOUS AND HAZARDOUS SUBSTANCE which should be handled by trained staff only.

Applications

- Western Blot (Tissue lysate)

The Plin3 polyclonal antibody (Cat # PAB7251) (0.1 ug/mL) staining of rat skin lysate (35 ug protein in RIPA buffer). Primary incubation was 1 hour. Detected by chemiluminescence.

- Enzyme-linked Immunoabsorbent Assay

Gene Info — M6prbp1

Entrez GeneID	66905
Protein Accession#	NP_080112.1
Gene Name	M6prbp1
Gene Alias	1300012C15Rik, Tip47
Gene Description	mannose-6-phosphate receptor binding protein 1
Gene Ontology	Hyperlink
Other Designations	-

Publication Reference

- [A proposed model of fat packaging by exchangeable lipid droplet proteins.](#)

Wolins NE, Brasaemle DL, Bickel PE.

FEBS Letters 2006 Sep; 580(23):5484.