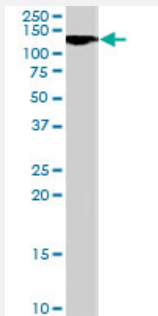


Cyld polyclonal antibody

Catalog # PAB7243 Size 100 ug

Applications



Western Blot (Tissue lysate)

The Cyld polyclonal antibody (Cat # PAB7243) (0.5 ug/mL) staining of rat brain lysate (35 ug protein in RIPA buffer). Primary incubation was 1 hour. Detected by chemiluminescence.

Specification

Product Description Goat polyclonal antibody raised against synthetic peptide of Cyld.

Immunogen A synthetic peptide corresponding to mouse Cyld.

Sequence C-DSQQSKSKNPWYIDE

Host Goat

Theoretical MW (kDa) 107

Reactivity Mouse, Rat

Form Liquid

Purification Antigen affinity purification

Concentration 0.5 mg/mL

Quality Control Testing Antibody Reactive Against Synthetic Peptide.

Recommend Usage
ELISA (1:32000)
Western Blot (0.5-1.5 ug/mL)
The optimal working dilution should be determined by the end user.

Storage Buffer	In Tris saline, pH 7.3 (0.5% BSA, 0.02% sodium azide)
Storage Instruction	Store at -20°C. Aliquot to avoid repeated freezing and thawing.
Note	This product contains sodium azide: a POISONOUS AND HAZARDOUS SUBSTANCE which should be handled by trained staff only.

Applications

- Western Blot (Tissue lysate)

The Cyld polyclonal antibody (Cat # PAB7243) (0.5 ug/mL) staining of rat brain lysate (35 ug protein in RIPA buffer). Primary incubation was 1 hour. Detected by chemiluminescence.

- Enzyme-linked Immunoabsorbent Assay

Gene Info — Cyld

Entrez GeneID	74256
Protein Accession#	NP_775545.1
Gene Name	Cyld
Gene Alias	2010013M14Rik, 2900009M21Rik, C130039D01Rik, CDMT, CYLD1, EAC, mKIAA0849
Gene Description	cylindromatosis (turban tumor syndrome)
Gene Ontology	Hyperlink
Other Designations	ubiquitin carboxyl-terminal hydrolase CYLD

Publication Reference

- [Cyld inhibits tumor cell proliferation by blocking Bcl-3-dependent NF-kappaB signaling.](#)

Massoumi R, Chmielarska K, Hennecke K, Pfeifer A, Fassler R.

Cell 2006 May; 125(4):665.

Application: IHC-P, WB, Mouse, Brain, MEFs, Skin