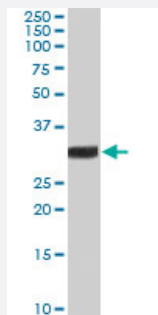


LXN polyclonal antibody

Catalog # PAB7228

Size 100 ug

Applications



Western Blot (Tissue lysate)

LXN polyclonal antibody (Cat # PAB7228) (0.1 ug/mL) staining of rat brain lysate (35 ug protein in RIPA buffer). Primary incubation was 1 hour. Detected by chemiluminescence.

Specification

Product Description Goat polyclonal antibody raised against synthetic peptide of LXN.

Immunogen A synthetic peptide corresponding to C-terminus of human LXN.

Sequence C-QYGTKVKHNSRLPKE

Host Goat

Theoretical MW (kDa) 25.8

Reactivity Human, Mouse, Rat

Form Liquid

Purification Antigen affinity purification

Concentration 0.5 mg/mL

Recommend Usage ELISA (1:128000)
Western Blot (1-3 ug/mL)
The optimal working dilution should be determined by the end user.

Storage Buffer In Tris saline, pH 7.3 (0.5% BSA, 0.02% sodium azide)

Storage Instruction

Store at -20°C.
Aliquot to avoid repeated freezing and thawing.

Note

This product contains sodium azide: a POISONOUS AND HAZARDOUS SUBSTANCE which should be handled by trained staff only.

Applications

- Western Blot (Tissue lysate)

LXN polyclonal antibody (Cat # PAB7228) (0.1 ug/mL) staining of rat brain lysate (35 ug protein in RIPA buffer). Primary incubation was 1 hour. Detected by chemiluminescence.

- Immunohistochemistry (Formalin/PFA-fixed paraffin-embedded sections)

- Enzyme-linked Immunoabsorbent Assay

Gene Info — LXN

Entrez GeneID [56925](#)

Protein Accession# [NP_064554.2](#)

Gene Name LXN

Gene Alias ECI, TCI

Gene Description latexin

Omim ID [609305](#)

Gene Ontology [Hyperlink](#)

Gene Summary This gene encodes the only known protein inhibitor of zinc-dependent metallopeptidases. [provided by RefSeq]

Other Designations endogenous carboxypeptidase inhibitor

Publication Reference

- [Latexin is a newly discovered regulator of hematopoietic stem cells.](#)

de Haan G.

Nature Genetics 2007 Feb; 39(2):141.