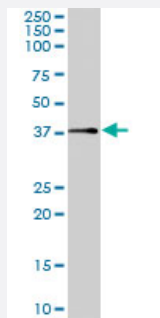


KLK5 polyclonal antibody

Catalog # PAB7227 Size 100 ug

Applications



Western Blot (Tissue lysate)

KLK5 polyclonal antibody (Cat # PAB7227) (0.1 ug/mL) staining of human prostate lysate (35 ug protein in RIPA buffer). Primary incubation was 1 hour. Detected by chemiluminescence.

Specification

Product Description	Goat polyclonal antibody raised against synthetic peptide of KLK5.
Immunogen	A synthetic peptide corresponding to human KLK5.
Sequence	KAGRDSCQGD
Host	Goat
Theoretical MW (kDa)	32
Reactivity	Human
Specificity	All variants (NP_0.36559.1, NP_001070959.1, NP_001070960.1) represent identical protein.
Form	Liquid
Purification	Antigen affinity purification
Concentration	0.5 mg/mL
Quality Control Testing	Antibody Reactive Against Synthetic Peptide.

Recommend Usage	ELISA (1:4000) Western Blot (0.1-0.3 ug/mL) The optimal working dilution should be determined by the end user.
Storage Buffer	In Tris saline, pH 7.3 (0.5% BSA, 0.02% sodium azide)
Storage Instruction	Store at -20°C. Aliquot to avoid repeated freezing and thawing.
Note	This product contains sodium azide: a POISONOUS AND HAZARDOUS SUBSTANCE which should be handled by trained staff only.

Applications

- Western Blot (Tissue lysate)

KLK5 polyclonal antibody (Cat # PAB7227) (0.1 ug/mL) staining of human prostate lysate (35 ug protein in RIPA buffer). Primary incubation was 1 hour. Detected by chemiluminescence.

- Enzyme-linked Immunoabsorbent Assay

Gene Info — KLK5

Entrez GeneID	25818
Protein Accession#	NP_036559.1;NP_001070959.1;NP_001070960.1
Gene Name	KLK5
Gene Alias	KLK-L2, KLKL2, SCTE
Gene Description	kallikrein-related peptidase 5
Omim ID	605643
Gene Ontology	Hyperlink
Gene Summary	Kallikreins are a subgroup of serine proteases having diverse physiological functions. Growing evidence suggests that many kallikreins are implicated in carcinogenesis and some have potential as novel cancer and other disease biomarkers. This gene is one of the fifteen kallikrein subfamily members located in a cluster on chromosome 19. Its expression is up-regulated by estrogens and progestins. The encoded protein is secreted and may be involved in desquamation in the epidermis. Alternative splicing results in multiple transcript variants encoding the same protein. [provided by RefSeq]
Other Designations	kallikrein 5 kallikrein-like protein 2 stratum corneum tryptic enzyme

Publication Reference

- [Human tissue kallikrein 5 is a member of a proteolytic cascade pathway involved in seminal clot liquefaction and potentially in prostate cancer progression.](#)

Michael IP, Pampalakis G, Mikolajczyk SD, Malm J, Sotiropoulou G, Diamandis EP.

The Journal of Biological Chemistry 2006 May; 281(18):12743.

Disease

- [Genetic Predisposition to Disease](#)
- [Prostatic Neoplasms](#)