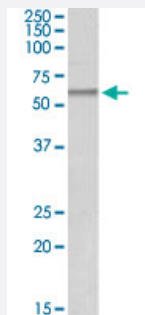


pnpla2 polyclonal antibody

Catalog # PAB7224

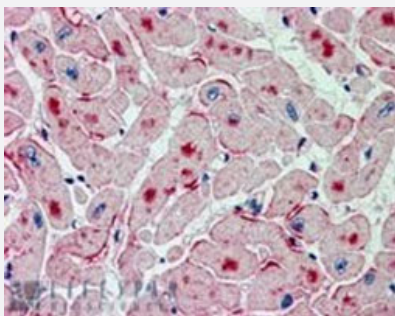
Size 100 ug

Applications



Western Blot (Tissue lysate)

pnpla2 polyclonal antibody (Cat # PAB7224, 0.5 ug/mL) staining of human adipose lysate (35 ug protein in RIPA buffer) . Primary incubation was 1 hour. Detected by chemiluminescence.



Immunohistochemistry (Formalin/PFA-fixed paraffin-embedded sections)

pnpla2 polyclonal antibody (Cat # PAB7224, 2.5 ug/mL) staining of paraffin embedded human heart. Steamed antigen retrieval with citrate buffer pH 6, AP-staining.

Specification

Product Description	Goat polyclonal antibody raised against synthetic peptide of pnpla2.
Immunogen	A synthetic peptide corresponding to mouse pnpla2.
Sequence	C-NIIEVSKEARKR
Host	Goat
Theoretical MW (kDa)	55.3
Reactivity	Human

Specificity	This antibody was designed using the Mouse sequence NP_080078.1, which differs by 2 amino acids (from the human sequence NP_065109.1).
Form	Liquid
Purification	Antigen affinity purification
Concentration	0.5 mg/mL
Quality Control Testing	Antibody Reactive Against Synthetic Peptide.
Recommend Usage	ELISA (1:32000) Western blot (0.5-2 ug/mL) Immunohistochemistry (Formalin/PFA-fixed paraffin-embedded sections) (2-3 ug/mL) The optimal working dilution should be determined by the end user.
Storage Buffer	In Tris saline, pH 7.3 (0.5% BSA, 0.02% sodium azide)
Storage Instruction	Store at -20°C. Aliquot to avoid repeated freezing and thawing.
Note	This product contains sodium azide: a POISONOUS AND HAZARDOUS SUBSTANCE which should be handled by trained staff only.

Applications

- Western Blot (Tissue lysate)

pnpla2 polyclonal antibody (Cat # PAB7224, 0.5 ug/mL) staining of human adipose lysate (35 ug protein in RIPA buffer) .
Primary incubation was 1 hour. Detected by chemiluminescence.

- Immunohistochemistry (Formalin/PFA-fixed paraffin-embedded sections)

pnpla2 polyclonal antibody (Cat # PAB7224, 2.5 ug/mL) staining of paraffin embedded human heart. Steamed antigen retrieval with citrate buffer pH 6, AP-staining.

- Enzyme-linked Immunoabsorbent Assay

Gene Info — Pnpla2

Entrez GeneID	66853
Protein Accession#	NP_080078.1
Gene Name	Pnpla2
Gene Alias	0610039C21Rik, 1110001C14Rik, Atgl, TTS-2.2

Gene Description	patatin-like phospholipase domain containing 2
Gene Ontology	Hyperlink
Other Designations	adipose triglyceride lipase desnutrin transport-secretion protein triglyceride hydrolase

Publication Reference

- [The ATGL gene is associated with free fatty acids, triglycerides, and type 2 diabetes.](#)

Schoenborn V, Heid IM, Vollmert C, Lingenhel A, Adams TD, Hopkins PN, Illig T, Zimmermann R, Zechner R, Hunt SC, Kronenberg F.

Diabetes 2006 May; 55(5):1270.