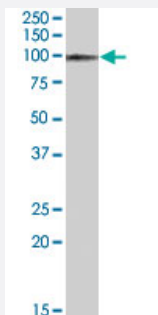


# ITCH polyclonal antibody

Catalog # PAB7215

Size 100 ug

## Applications



### Western Blot (Tissue lysate)

ITCH polyclonal antibody (Cat # PAB7215) (0.03 ug/mL) staining of human brain (frontal cortex) lysate (35 ug protein in RIPA buffer). Primary incubation was 1 hour. Detected by chemiluminescence.

## Specification

**Product Description** Goat polyclonal antibody raised against synthetic peptide of ITCH.

**Immunogen** A synthetic peptide corresponding to human ITCH.

**Sequence** C-EIKSHDLKPNGGN

**Host** Goat

**Theoretical MW (kDa)** 98.7

**Reactivity** Human

**Form** Liquid

**Purification** Antigen affinity purification

**Concentration** 0.5 mg/mL

**Quality Control Testing** Antibody Reactive Against Synthetic Peptide.

**Recommend Usage**  
 ELISA (1:32000)  
 Western Blot (0.03-0.1 ug/mL)  
 The optimal working dilution should be determined by the end user.

Storage Buffer	In Tris saline, pH 7.3 (0.5% BSA, 0.02% sodium azide)
Storage Instruction	Store at -20°C. Aliquot to avoid repeated freezing and thawing.
Note	This product contains sodium azide: a POISONOUS AND HAZARDOUS SUBSTANCE which should be handled by trained staff only.

## Applications

- Western Blot (Tissue lysate)

ITCH polyclonal antibody (Cat # PAB7215) (0.03 ug/mL) staining of human brain (frontal cortex) lysate (35 ug protein in RIPA buffer). Primary incubation was 1 hour. Detected by chemiluminescence.

- Enzyme-linked Immunoabsorbent Assay

## Gene Info — ITCH

Entrez GeneID	<a href="#">83737</a>
Protein Accession#	<a href="#">NP_113671.3</a>
Gene Name	ITCH
Gene Alias	AIF4, AIP4, NAPP1, dJ468O1.1
Gene Description	itchy E3 ubiquitin protein ligase homolog (mouse)
Omim ID	<a href="#">606409</a>
Gene Ontology	<a href="#">Hyperlink</a>

Gene Summary	Atrophin-1 contains a polyglutamine repeat, expansion of which is responsible for dentatorubral and pallidolysian atrophy. The protein encoded by this gene interacts with atrophin-1. This encoded protein is a closely related member of the NEDD4-like protein family. This family of proteins are E3 ubiquitin-ligase molecules and regulate key trafficking decisions, including targeting of proteins to proteosomes or lysosomes. This encoded protein contains four tandem WW domains and a HECT (homologous to the E6-associated protein carboxyl terminus) domain. It can act as a transcriptional corepressor of p45/NFE2 and may participate in the regulation of immune responses by modifying Notch-mediated signaling. It is highly similar to the mouse Itch protein, which has been implicated in the regulation and differentiation of erythroid and lymphoid cells. [provided by RefSeq]
--------------	---

Other Designations	NFE2-associated polypeptide 1 atrophin-1 interacting protein 4 dJ468O1.1 (atrophin 1 interacting protein 4 (AIP4)) itchy homolog E3 ubiquitin protein ligase ubiquitin protein ligase ITCH
--------------------	--

## Publication Reference

- [Numb is a suppressor of Hedgehog signalling and targets Gli1 for Itch-dependent ubiquitination.](#)

Di Marcotullio L, Ferretti E, Greco A, De Smaele E, Po A, Sico MA, Alimandi M, Giannini G, Maroder M, Screpanti I, Gulino A.  
Nature Cell Biology 2006 Dec; 8(12):1415.

Application: IF, WB, Human, Daoy, GCP, HEK 293 cells

## Pathway

- [Endocytosis](#)
- [Ubiquitin mediated proteolysis](#)