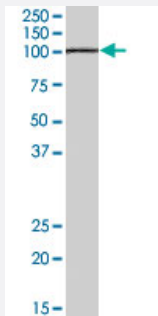


# LARP2 polyclonal antibody

Catalog # PAB7206      Size 100 ug

## Applications



### Western Blot (Tissue lysate)

LARP2 polyclonal antibody (Cat # PAB7206) (0.1 ug/mL) staining of human testis lysate (35 ug protein in RIPA buffer). Primary incubation was 1 hour. Detected by chemiluminescence.

## Specification

<b>Product Description</b>	Goat polyclonal antibody raised against synthetic peptide of LARP2.
<b>Immunogen</b>	A synthetic peptide corresponding to human LARP2.
<b>Sequence</b>	C-QGVLHIPKKDLTDE
<b>Host</b>	Goat
<b>Theoretical MW (kDa)</b>	105, 59.8, 41.4
<b>Reactivity</b>	Human
<b>Specificity</b>	This antibody is expected to recognize isoform 1 (NP_060548.2) only.
<b>Form</b>	Liquid
<b>Purification</b>	Antigen affinity purification
<b>Concentration</b>	0.5 mg/mL
<b>Quality Control Testing</b>	Antibody Reactive Against Synthetic Peptide.

<b>Recommend Usage</b>	ELISA (1:128000) Western Blot (0.1-0.3 ug/mL) The optimal working dilution should be determined by the end user.
<b>Storage Buffer</b>	In Tris saline, pH 7.3 (0.5% BSA, 0.02% sodium azide)
<b>Storage Instruction</b>	Store at -20°C. Aliquot to avoid repeated freezing and thawing.
<b>Note</b>	This product contains sodium azide: a POISONOUS AND HAZARDOUS SUBSTANCE which should be handled by trained staff only.

## Applications

- Western Blot (Tissue lysate)

LARP2 polyclonal antibody (Cat # PAB7206) (0.1 ug/mL) staining of human testis lysate (35 ug protein in RIPA buffer). Primary incubation was 1 hour. Detected by chemiluminescence.

- Enzyme-linked Immunoabsorbent Assay

## Gene Info — LARP2

<b>Entrez GeneID</b>	<a href="#">55132</a>
<b>Protein Accession#</b>	<a href="#">NP_060548.2</a>
<b>Gene Name</b>	LARP2
<b>Gene Alias</b>	DKFZp686L13217, MGC117277, MGC75174
<b>Gene Description</b>	La ribonucleoprotein domain family, member 2
<b>Gene Ontology</b>	<a href="#">Hyperlink</a>
<b>Gene Summary</b>	This gene encodes a protein containing domains found in the La related protein of Drosophila melanogaster. La motif-containing proteins are thought to be RNA-binding proteins, where the La motif and adjacent amino acids fold into an RNA recognition motif. The La motif is also found in proteins unrelated to the La protein. Alternative splicing has been observed at this locus and three variants, encoding distinct isoforms, are described. Additional splice variation has been identified but the full-length nature of these transcripts has not been determined. [provided by RefSeq]
<b>Other Designations</b>	La ribonucleoprotein domain family member 2

## Publication Reference

- [The La protein.](#)

Wolin SL, Cedervall T.

Annu Rev Biochem 2001 Nov; 71:375.

Application: WB-Tr, Human, HeLa, Mammalian cells