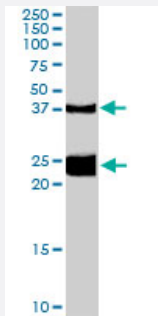


# GALR1 polyclonal antibody

Catalog # PAB7173

Size 100 ug

## Applications



### Western Blot (Tissue lysate)

GALR1 polyclonal antibody (Cat # PAB7173) (0.1 ug/mL) staining of rat spinal cord lysate (35 ug protein in RIPA buffer). Primary incubation was 1 hour. Detected by chemiluminescence.

## Specification

**Product Description** Goat polyclonal antibody raised against synthetic peptide of GALR1.

**Immunogen** A synthetic peptide corresponding to human GALR1.

**Sequence** C-RSKPGKPRSTTN

**Host** Goat

**Theoretical MW (kDa)** 39

**Reactivity** Rat

**Form** Liquid

**Purification** Antigen affinity purification

**Concentration** 0.5 mg/mL

**Quality Control Testing** Antibody Reactive Against Synthetic Peptide.

**Recommend Usage**  
 ELISA (1:128000)  
 Western Blot (0.1-0.3 ug/mL)  
 The optimal working dilution should be determined by the end user.

Storage Buffer	In Tris saline, pH 7.3 (0.5% BSA, 0.02% sodium azide)
Storage Instruction	Store at -20°C. Aliquot to avoid repeated freezing and thawing.
Note	This product contains sodium azide: a POISONOUS AND HAZARDOUS SUBSTANCE which should be handled by trained staff only.

## Applications

- Western Blot (Tissue lysate)

GALR1 polyclonal antibody (Cat # PAB7173) (0.1 ug/mL) staining of rat spinal cord lysate (35 ug protein in RIPA buffer). Primary incubation was 1 hour. Detected by chemiluminescence.

- Enzyme-linked Immunoabsorbent Assay

## Gene Info — GALR1

Entrez GeneID	<a href="#">2587</a>
Protein Accession#	<a href="#">NP_001471.1</a>
Gene Name	GALR1
Gene Alias	GALNR, GALNR1
Gene Description	galanin receptor 1
Omim ID	<a href="#">600377</a>
Gene Ontology	<a href="#">Hyperlink</a>
Gene Summary	The neuropeptide galanin elicits a range of biological effects by interaction with specific G-protein-coupled receptors. Galanin receptors are seven-transmembrane proteins shown to activate a variety of intracellular second-messenger pathways. GALR1 inhibits adenylyl cyclase via a G protein of the Gi/Go family. GALR1 is widely expressed in the brain and spinal cord, as well as in peripheral sites such as the small intestine and heart. [provided by RefSeq]
Other Designations	-

## Publication Reference

- [Galanin receptor 1 has anti-proliferative effects in oral squamous cell carcinoma.](#)

Henson BS, Neubig RR, Jang I, Ogawa T, Zhang Z, Carey TE, D'Silva NJ.

The Journal of Biological Chemistry 2005 Jun; 280(24):22564.

Application: WB, Human, HOK16B, UM-SCC-11A, UM-SCC-14A, UM-SCC-17B, UM-SCC-22B cells

## Pathway

- [Neuroactive ligand-receptor interaction](#)

## Disease

- [Alcoholism](#)
- [Anorexia Nervosa](#)
- [Bulimia](#)
- [Cardiovascular Diseases](#)
- [Diabetes Mellitus](#)
- [Edema](#)
- [Genetic Predisposition to Disease](#)
- [Mental Disorders](#)
- [Obesity](#)