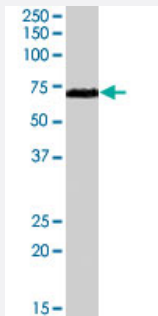


RAD9A polyclonal antibody

Catalog # PAB7169 Size 100 ug

Applications



Western Blot (Cell lysate)

RAD9A polyclonal antibody (Cat # PAB7169) (0.3 ug/mL) staining of A-431 cell lysate (35 ug protein in RIPA buffer). Primary incubation was 1 hour. Detected by chemiluminescence.

Specification

Product Description Goat polyclonal antibody raised against synthetic peptide of RAD9A.

Immunogen A synthetic peptide corresponding to human RAD9A.

Sequence C-QGPSPVLAEDSEGE

Host Goat

Theoretical MW (kDa) 42.5

Reactivity Human

Form Liquid

Purification Antigen affinity purification

Concentration 0.5 mg/mL

Quality Control Testing Antibody Reactive Against Synthetic Peptide.

Recommend Usage
 ELISA (1:32000)
 Western Blot (0.3-1 ug/mL)
 The optimal working dilution should be determined by the end user.

Storage Buffer	In Tris saline, pH 7.3 (0.5% BSA, 0.02% sodium azide)
Storage Instruction	Store at -20°C. Aliquot to avoid repeated freezing and thawing.
Note	This product contains sodium azide: a POISONOUS AND HAZARDOUS SUBSTANCE which should be handled by trained staff only.

Applications

- Western Blot (Cell lysate)

RAD9A polyclonal antibody (Cat # PAB7169) (0.3 ug/mL) staining of A-431 cell lysate (35 ug protein in RIPA buffer). Primary incubation was 1 hour. Detected by chemiluminescence.

- Enzyme-linked Immunoabsorbent Assay

Gene Info — RAD9A

Entrez GeneID	5883
Protein Accession#	NP_004575.1
Gene Name	RAD9A
Gene Alias	RAD9
Gene Description	RAD9 homolog A (S. pombe)
Omim ID	603761
Gene Ontology	Hyperlink
Gene Summary	This gene product is highly similar to Schizosaccharomyces pombe rad9, a cell cycle checkpoint protein required for cell cycle arrest and DNA damage repair in response to DNA damage. This protein is found to possess 3' to 5' exonuclease activity, which may contribute to its role in sensing and repairing DNA damage. It forms a checkpoint protein complex with RAD1 and HUS1. This complex is recruited by checkpoint protein RAD17 to the sites of DNA damage, which is thought to be important for triggering the checkpoint-signaling cascade. Use of alternative polyA sites has been noted for this gene. [provided by RefSeq]
Other Designations	RAD9 homolog cell cycle checkpoint control protein

Publication Reference

- [The Rad9 protein enhances survival and promotes DNA repair following exposure to ionizing radiation.](#)

Brandt PD, Helt CE, Keng PC, Bambara RA.

Biochemical and Biophysical Research Communications 2006 Aug; 347(1):232.

Application: WB-Tr, Human, NCI-H1299 cells

Disease

- [Ataxia telangiectasia](#)
- [Cardiovascular Diseases](#)
- [Colorectal Neoplasms](#)
- [Diabetes Mellitus](#)
- [Edema](#)
- [Kidney Failure](#)