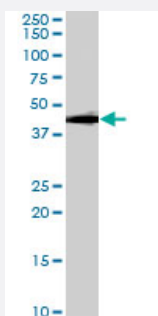


CNTFR polyclonal antibody

Catalog # PAB7167

Size 100 ug

Applications



Western Blot (Tissue lysate)

CNTFR polyclonal antibody (Cat # PAB7167) (0.3 ug/mL) staining of mouse brain lysate (35 ug protein in RIPA buffer). Primary incubation was 1 hour. Detected by chemiluminescence.

Specification

Product Description	Goat polyclonal antibody raised against synthetic peptide of CNTFR.
Immunogen	A synthetic peptide corresponding to human CNTFR.
Sequence	CRSNTYPKGFY
Host	Goat
Theoretical MW (kDa)	40.6
Reactivity	Mouse
Specificity	This antibody is expected to recognize both reported isoforms (NP_671693.1, NP_001833.1).
Form	Liquid
Purification	Antigen affinity purification
Concentration	0.5 mg/mL
Quality Control Testing	Antibody Reactive Against Synthetic Peptide.

Recommend Usage	ELISA (1:16000) Western Blot (0.3-1 ug/mL) The optimal working dilution should be determined by the end user.
Storage Buffer	In Tris saline, pH 7.3 (0.5% BSA, 0.02% sodium azide)
Storage Instruction	Store at -20°C. Aliquot to avoid repeated freezing and thawing.
Note	This product contains sodium azide: a POISONOUS AND HAZARDOUS SUBSTANCE which should be handled by trained staff only.

Applications

- Western Blot (Tissue lysate)

CNTRF polyclonal antibody (Cat # PAB7167) (0.3 ug/mL) staining of mouse brain lysate (35 ug protein in RIPA buffer). Primary incubation was 1 hour. Detected by chemiluminescence.

- Enzyme-linked Immunoabsorbent Assay

Gene Info — CNTRF

Entrez GeneID	1271
Protein Accession#	NP_671693.1;NP_001833.1
Gene Name	CNTRF
Gene Alias	MGC1774
Gene Description	ciliary neurotrophic factor receptor
Omim ID	118946
Gene Ontology	Hyperlink
Gene Summary	<p>This gene encodes a hematopoietin/interferon-class receptor belonging to the cytokine superfamily of receptors. The encoded gene product represents the CNTF-specific alpha subunit of a heterotrimer forming the CNTF receptor complex, which also includes LIFR and gp130. The receptor is attached to the membrane by a glycosyl-phosphatidylinositol linkage and contains an immunoglobulin-like C2-type domain and a fibronectin type-III domain. Signal transduction requires that CNTF bind first to this alpha component, which permits the recruitment of gp130 and LIFR beta to form the tripartite receptor complex. Signal transduction stimulates gene expression, cell survival or differentiation in a variety of neuronal cell types. Alternative splicing has been observed at this locus and two variants, both encoding the same protein, have been identified. [provided by RefSeq]</p>

Other Designations

CNTFR alpha|OTTHUMP00000021270|OTTHUMP00000021271|ciliary neurotrophic factor receptor alpha

Publication Reference

- [Expression of ciliary neurotrophic factor \(CNTF\), CNTF receptor alpha \(CNTFR-alpha\) following experimental intracerebral hemorrhage in rats.](#)

Yokota H, Yoshikawa M, Hirabayashi H, Nakase H, Uranishi R, Nishimura F, Sugie Y, Ishizaka S, Sakaki T.

Neuroscience Letters 2005 Apr; 377(3):170.

Application: IF, Rat, Brain

Pathway

- [Cytokine-cytokine receptor interaction](#)
- [Jak-STAT signaling pathway](#)

Disease

- [Alzheimer disease](#)
- [Cerebral Amyloid Angiopathy](#)
- [Disease Models](#)
- [Eating Disorders](#)
- [Genetic Predisposition to Disease](#)
- [Mental Disorders](#)
- [Neuroblastoma](#)
- [Tobacco Use Disorder](#)