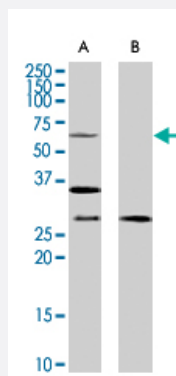


PRPF31 polyclonal antibody

Catalog # PAB7154

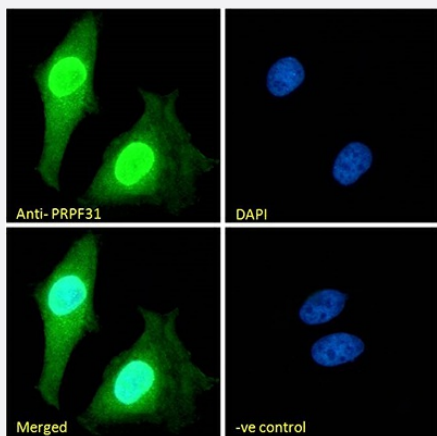
Size 100 ug

Applications



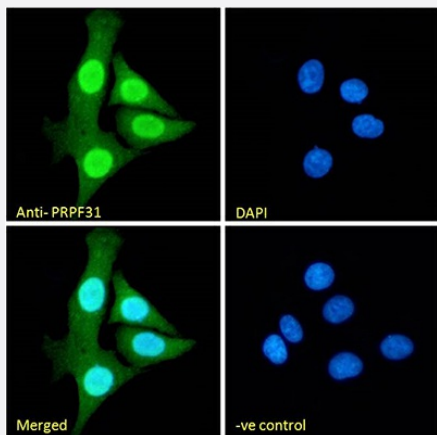
Western Blot (Cell lysate)

PRPF31 polyclonal antibody (Cat # PAB7154) (1 ug/mL) staining of HeLa cell lysate (35 ug protein in RIPA buffer) with (B) and without (A) blocking with the immunising peptide. Primary incubation was 1 hour. Detected by chemiluminescence.



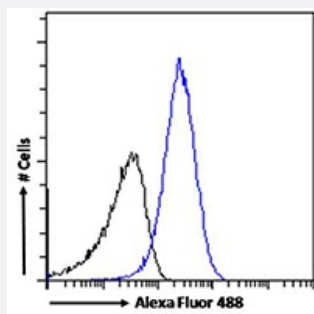
Immunofluorescence

PRPF31 polyclonal antibody (Cat # PAB7154) Immunofluorescence analysis of paraformaldehyde fixed HeLa cells, permeabilized with 0.15% Triton. Primary incubation 1hr (10 ug/mL) followed by Alexa Fluor 488 secondary antibody (2 ug/mL), showing strong nuclear and some cytoplasmic staining. The nuclear stain is DAPI (blue). Negative control: Unimmunized goat IgG (10 ug/mL) followed by Alexa Fluor 488 secondary antibody (2 ug/mL).



Immunofluorescence

PRPF31 polyclonal antibody (Cat # PAB7154) Immunofluorescence analysis of paraformaldehyde fixed HEK293 cells, permeabilized with 0.15% Triton. Primary incubation 1hr (10 ug/mL) followed by Alexa Fluor 488 secondary antibody (2 ug/mL), showing strong nuclear and weak cytoplasmic staining. The nuclear stain is DAPI (blue). Negative control: Unimmunized goat IgG (10 ug/mL) followed by Alexa Fluor 488 secondary antibody (2 ug/mL).



Flow Cytometry

PRPF31 polyclonal antibody (Cat # PAB7154) Flow cytometric analysis of paraformaldehyde fixed HEK293 cells (blue line), permeabilized with 0.5% Triton. Primary incubation 1hr (10 ug/mL) followed by Alexa Fluor 488 secondary antibody (1 ug/mL). IgG control: Unimmunized goat IgG (black line) followed by Alexa Fluor 488 secondary antibody.

Specification

Product Description Goat polyclonal antibody raised against synthetic peptide of PRPF31.

Immunogen A synthetic peptide corresponding to human PRPF31.

Sequence KELGNSLDKCKNNEN

Host Goat

Theoretical MW (kDa) 55.4

Reactivity Human

Form Liquid

Purification Antigen affinity purification

Concentration 0.5 mg/mL

Quality Control Testing Antibody Reactive Against Synthetic Peptide.

Recommend Usage
ELISA (1:128000)
Immunofluorescence (10 ug/mL)
Flow Cytometry (10 ug/mL)
Western Blot (1-3 ug/mL)
The optimal working dilution should be determined by the end user.

Storage Buffer In Tris saline, pH 7.3 (0.5% BSA, 0.02% sodium azide)

Storage Instruction
Store at -20°C.
Aliquot to avoid repeated freezing and thawing.

Note This product contains sodium azide: a POISONOUS AND HAZARDOUS SUBSTANCE which should be handled by trained staff only.

Applications

- Western Blot (Cell lysate)

PRPF31 polyclonal antibody (Cat # PAB7154) (1 ug/mL) staining of HeLa cell lysate (35 ug protein in RIPA buffer) with (B) and without (A) blocking with the immunising peptide. Primary incubation was 1 hour. Detected by chemiluminescence.

- Immunofluorescence

PRPF31 polyclonal antibody (Cat # PAB7154) Immunofluorescence analysis of paraformaldehyde fixed HeLa cells, permeabilized with 0.15% Triton. Primary incubation 1hr (10 ug/mL) followed by Alexa Fluor 488 secondary antibody (2 ug/mL), showing strong nuclear and some cytoplasmic staining. The nuclear stain is DAPI (blue). Negative control: Unimmunized goat IgG (10 ug/mL) followed by Alexa Fluor 488 secondary antibody (2 ug/mL).

- Immunofluorescence

PRPF31 polyclonal antibody (Cat # PAB7154) Immunofluorescence analysis of paraformaldehyde fixed HEK293 cells, permeabilized with 0.15% Triton. Primary incubation 1hr (10 ug/mL) followed by Alexa Fluor 488 secondary antibody (2 ug/mL), showing strong nuclear and weak cytoplasmic staining. The nuclear stain is DAPI (blue). Negative control: Unimmunized goat IgG (10 ug/mL) followed by Alexa Fluor 488 secondary antibody (2 ug/mL).

- Enzyme-linked Immunoabsorbent Assay

- Flow Cytometry

PRPF31 polyclonal antibody (Cat # PAB7154) Flow cytometric analysis of paraformaldehyde fixed HEK293 cells (blue line), permeabilized with 0.5% Triton. Primary incubation 1hr (10 ug/mL) followed by Alexa Fluor 488 secondary antibody (1 ug/mL). IgG control: Unimmunized goat IgG (black line) followed by Alexa Fluor 488 secondary antibody.

Gene Info — PRPF31

Entrez GeneID [26121](#)

Protein Accession# [NP_056444.2](#)

Gene Name PRPF31

Gene Alias DKFZp566J153, NY-BR-99, PRP31, RP11

Gene Description PRP31 pre-mRNA processing factor 31 homolog (S. cerevisiae)

Omim ID [600138](#) [606419](#)

Gene Ontology [Hyperlink](#)

Gene Summary

This gene encodes a component of the spliceosome complex and is one of several retinitis pigmentosa-causing genes. When the gene product is added to the spliceosome complex, activation occurs

Other Designations

OTTHUMP00000068806|pre-mRNA processing factor 31 homolog

Publication Reference

- [Mutations in PRPF31 inhibit pre-mRNA splicing of rhodopsin gene and cause apoptosis of retinal cells.](#)

Yuan L, Kawada M, Havlioglu N, Tang H, Wu JY.

The Journal of Neuroscience 2005 Jan; 25(3):748.

Application: ISH, WB-Ti, WB-Tr, Mouse, Human, Retina, HEK cells

Disease

- [Retinal Diseases](#)
- [Retinitis Pigmentosa](#)