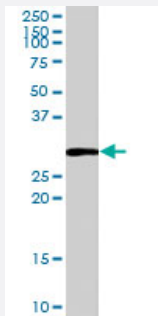


HOXB13 polyclonal antibody

Catalog # PAB7144

Size 100 ug

Applications



Western Blot (Cell lysate)

HOXB13 polyclonal antibody (Cat # PAB7144) (0.1 ug/mL) staining of HeLa cell lysate (35 ug protein in RIPA buffer). Primary incubation was 1 hour. Detected by chemiluminescence.

Specification

Product Description Goat polyclonal antibody raised against synthetic peptide of HOXB13.

Immunogen A synthetic peptide corresponding to human HOXB13.

Sequence C-KKVLAKVKNSATP

Host Goat

Theoretical MW (kDa) 30.7

Reactivity Human

Form Liquid

Purification Antigen affinity purification

Concentration 0.5 mg/mL

Quality Control Testing Antibody Reactive Against Synthetic Peptide.

Recommend Usage
ELISA (1:128000)
Western Blot (0.1-0.3 ug/mL)
The optimal working dilution should be determined by the end user.

Storage Buffer	In Tris saline, pH 7.3 (0.5% BSA, 0.02% sodium azide)
Storage Instruction	Store at -20°C. Aliquot to avoid repeated freezing and thawing.
Note	This product contains sodium azide: a POISONOUS AND HAZARDOUS SUBSTANCE which should be handled by trained staff only.

Applications

- Western Blot (Cell lysate)

HOXB13 polyclonal antibody (Cat # PAB7144) (0.1 ug/mL) staining of HeLa cell lysate (35 ug protein in RIPA buffer). Primary incubation was 1 hour. Detected by chemiluminescence.

- Enzyme-linked Immunoabsorbent Assay

Gene Info — HOXB13

Entrez GeneID	10481
Protein Accession#	NP_006352.2
Gene Name	HOXB13
Gene Alias	PSGD
Gene Description	homeobox B13
Omim ID	604607
Gene Ontology	Hyperlink
Gene Summary	This gene encodes a transcription factor that belongs to the homeobox gene family. Genes of this family are highly conserved among vertebrates and essential for vertebrate embryonic development. This gene has been implicated to play a role in fetal skin development and cutaneous regeneration. In mice, a similar gene was shown to exhibit temporal and spatial colinearity in the main body axis of the embryo, but was not expressed in the secondary axes, which suggests functions in body patterning along the axis. This gene and other HOXB genes form a gene cluster at chromosome the 17q21-22 region. [provided by RefSeq]
Other Designations	homeo box B13

Publication Reference

- [Regulation of tumor invasion by HOXB13 gene overexpressed in human endometrial cancer.](#)

Zhao Y, Yamashita T, Ishikawa M.

Oncology Reports 2005 Apr; 13(4):721.

Disease

- [Breast cancer](#)
- [Breast Neoplasms](#)