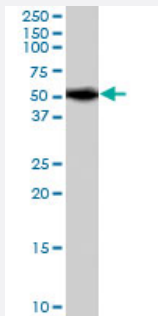


# PICK1 polyclonal antibody

Catalog # PAB7130      Size 100 ug

## Applications



### Western Blot (Tissue lysate)

PICK1 polyclonal antibody (Cat # PAB7130) (1 ug/mL) staining of mouse brain lysate (35 ug protein in RIPA buffer). Primary incubation was 1 hour. Detected by chemiluminescence.

## Specification

**Product Description** Goat polyclonal antibody raised against synthetic peptide of PICK1.

**Immunogen** A synthetic peptide corresponding to human PICK1.

**Sequence** C-HYNKLQADPKQ

**Host** Goat

**Theoretical MW (kDa)** 46.6

**Reactivity** Mouse, Rat

**Specificity** All three variants represent the same protein.

**Form** Liquid

**Purification** Antigen affinity purification

**Concentration** 0.5 mg/mL

**Quality Control Testing** Antibody Reactive Against Synthetic Peptide.

Recommend Usage	ELISA (1:16000) Western Blot (1-3 ug/mL) The optimal working dilution should be determined by the end user.
Storage Buffer	In Tris saline, pH 7.3 (0.5% BSA, 0.02% sodium azide)
Storage Instruction	Store at -20°C. Aliquot to avoid repeated freezing and thawing.
Note	This product contains sodium azide: a POISONOUS AND HAZARDOUS SUBSTANCE which should be handled by trained staff only.

## Applications

- Western Blot (Tissue lysate)

PICK1 polyclonal antibody (Cat # PAB7130) (1 ug/mL) staining of mouse brain lysate (35 ug protein in RIPA buffer). Primary incubation was 1 hour. Detected by chemiluminescence.

- Enzyme-linked Immunoabsorbent Assay

## Gene Info — PICK1

Entrez GeneID	<a href="#">9463</a>
Protein Accession#	<a href="#">NP_0.36539.1;NP_0010.34672.1;NP_0010.34673.1</a>
Gene Name	PICK1
Gene Alias	MGC15204, PICK, PRKCABP
Gene Description	protein interacting with PRKCA 1
Omim ID	<a href="#">605926</a>
Gene Ontology	<a href="#">Hyperlink</a>
Gene Summary	The protein encoded by this gene contains a PDZ domain, through which it interacts with protein kinase C, alpha (PRKCA). This protein may function as an adaptor that binds to and organizes the subcellular localization of a variety of membrane proteins. It has been shown to interact with multiple glutamate receptor subtypes, monoamine plasma membrane transporters, as well as non-voltage gated sodium channels, and may target PRKCA to these membrane proteins and thus regulate their distribution and function. This protein has also been found to act as an anchoring protein that specifically targets PRKCA to mitochondria in a ligand-specific manner. Three transcript variants encoding the same protein have been found for this gene. [provided by RefSeq]

**Other Designations**

OTTHUMP00000028509|PRKCA-binding protein|protein interacting with C kinase 1|protein kinase C, alpha binding protein

**Publication Reference**

- [Targeted in vivo mutations of the AMPA receptor subunit GluR2 and its interacting protein PICK1 eliminate cerebellar long-term depression.](#)

Steinberg JP, Takamiya K, Shen Y, Xia J, Rubio ME, Yu S, Jin W, Thomas GM, Linden DJ, Huganir RL.

Neuron 2006 Mar; 49(6):845.

Application: WB-Ti, Mouse , Mouse brain

**Disease**

- [Amphetamine-Related Disorders](#)
- [Genetic Predisposition to Disease](#)
- [Mental Disorders](#)
- [Psychoses](#)
- [Schizophrenia](#)