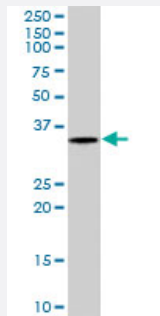


# VDAC2 polyclonal antibody

Catalog # PAB7105      Size 100 ug

## Applications



### Western Blot (Tissue lysate)

VDAC2 polyclonal antibody (Cat # PAB7105) (0.3 ug/mL) staining of human heart lysate (35 ug protein in RIPA buffer). Primary incubation was 1 hour. Detected by chemiluminescence.

## Specification

**Product Description** Goat polyclonal antibody raised against synthetic peptide of VDAC2.

**Immunogen** A synthetic peptide corresponding to human VDAC2.

**Sequence** C-DSAKSKLTRNN

**Host** Goat

**Theoretical MW (kDa)** 31.6

**Reactivity** Human

**Form** Liquid

**Purification** Antigen affinity purification

**Concentration** 0.5 mg/mL

**Quality Control Testing** Antibody Reactive Against Synthetic Peptide.

**Recommend Usage**  
 ELISA (1:64000)  
 Western Blot (0.3-1 ug/mL)  
 The optimal working dilution should be determined by the end user.

Storage Buffer	In Tris saline, pH 7.3 (0.5% BSA, 0.02% sodium azide)
Storage Instruction	Store at -20°C. Aliquot to avoid repeated freezing and thawing.
Note	This product contains sodium azide: a POISONOUS AND HAZARDOUS SUBSTANCE which should be handled by trained staff only.

## Applications

- Western Blot (Tissue lysate)

VDAC2 polyclonal antibody (Cat # PAB7105) (0.3 ug/mL) staining of human heart lysate (35 ug protein in RIPA buffer). Primary incubation was 1 hour. Detected by chemiluminescence.

- Enzyme-linked Immunoabsorbent Assay

## Gene Info — VDAC2

Entrez GeneID	<a href="#">7417</a>
Protein Accession#	<a href="#">NP_003366.2</a>
Gene Name	VDAC2
Gene Alias	FLJ23841
Gene Description	voltage-dependent anion channel 2
Omim ID	<a href="#">193245</a>
Gene Ontology	<a href="#">Hyperlink</a>
Other Designations	OTTHUMP00000019876

## Publication Reference

- [Bax-dependent regulation of Bak by voltage-dependent anion channel 2.](#)

Chandra D, Choy G, Daniel PT, Tang DG.

The Journal of Biological Chemistry 2005 May; 280(19):19051.

Application: WB-Ce, IP-WB, Human, HCT116 cells

## Pathway

- [Calcium signaling pathway](#)

## Disease

- [Alzheimer Disease](#)
- [Genetic Predisposition to Disease](#)