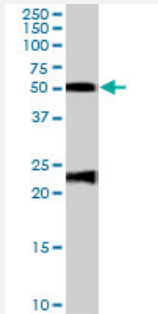


# FBLN5 polyclonal antibody

Catalog # PAB7098

Size 100 ug

## Applications



### Western Blot (Tissue lysate)

FBLN5 polyclonal antibody (Cat # PAB7098) (0.1 ug/mL) staining of human ovary lysate (35 ug protein in RIPA buffer). Primary incubation was 1 hour. Detected by chemiluminescence.

## Specification

**Product Description** Goat polyclonal antibody raised against synthetic peptide of FBLN5.

**Immunogen** A synthetic peptide corresponding to human FBLN5.

**Sequence** C-RPIKGPREIQLDLE

**Host** Goat

**Theoretical MW (kDa)** 50.2

**Reactivity** Human

**Form** Liquid

**Purification** Antigen affinity purification

**Concentration** 0.5 mg/mL

**Quality Control Testing** Antibody Reactive Against Synthetic Peptide.

**Recommend Usage**  
 ELISA (1:32000)  
 Western Blot (0.1-0.3 ug/mL)  
 The optimal working dilution should be determined by the end user.

Storage Buffer	In Tris saline, pH 7.3 (0.5% BSA, 0.02% sodium azide)
Storage Instruction	Store at -20°C. Aliquot to avoid repeated freezing and thawing.
Note	This product contains sodium azide: a POISONOUS AND HAZARDOUS SUBSTANCE which should be handled by trained staff only.

## Applications

- Western Blot (Tissue lysate)

FBLN5 polyclonal antibody (Cat # PAB7098) (0.1 ug/mL) staining of human ovary lysate (35 ug protein in RIPA buffer). Primary incubation was 1 hour. Detected by chemiluminescence.

- Enzyme-linked Immunoabsorbent Assay

## Gene Info — FBLN5

Entrez GeneID	<a href="#">10516</a>
Protein Accession#	<a href="#">NP_006320.2</a>
Gene Name	FBLN5
Gene Alias	ARMD3, DANCE, EVEC, FIBL-5, FLJ90059, UP50
Gene Description	fibulin 5
Omim ID	<a href="#">123700</a> <a href="#">219100</a> <a href="#">604580</a> <a href="#">608895</a>
Gene Ontology	<a href="#">Hyperlink</a>

Gene Summary	The protein encoded by this gene is a secreted, extracellular matrix protein containing an Arg-Gly-Asp (RGD) motif and calcium-binding EGF-like domains. It promotes adhesion of endothelial cells through interaction of integrins and the RGD motif. It is prominently expressed in developing arteries but less so in adult vessels. However, its expression is reinduced in balloon-injured vessels and atherosclerotic lesions, notably in intimal vascular smooth muscle cells and endothelial cells. Therefore, the protein encoded by this gene may play a role in vascular development and remodeling. Defects in this gene are a cause of autosomal dominant cutis laxa, autosomal recessive cutis laxa type I (CL type I), and age-related macular degeneration type 3 (ARMD3). [provided by RefSeq]
--------------	---

Other Designations	developmental arteries and neural crest epidermal growth factor-like urine p50 protein
--------------------	--

## Publication Reference

- [Fibulins 3 and 5 antagonize tumor angiogenesis in vivo.](#)

Albig AR, Neil JR, Schiemann WP.

Cancer Research 2006 Mar; 66(5):2621.

## Disease

- [Aortic Aneurysm](#)
- [Atherosclerosis](#)
- [Calcinosis](#)
- [Coronary Artery Disease](#)
- [Diabetes Mellitus](#)
- [Disease Progression](#)
- [Genetic Predisposition to Disease](#)
- [Macular Degeneration](#)
- [Tobacco Use Disorder](#)
- [Vision](#)