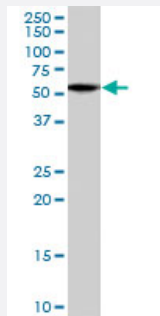


TPTE polyclonal antibody

Catalog # PAB7091 Size 100 ug

Applications



Western Blot (Tissue lysate)

TPTE polyclonal antibody (Cat # PAB7091) (1 ug/mL) staining of human testis lysate (35 ug protein in RIPA buffer). Primary incubation was 1 hour. Detected by chemiluminescence.

Specification

Product Description	Goat polyclonal antibody raised against synthetic peptide of TPTE.
Immunogen	A synthetic peptide corresponding to human TPTE.
Sequence	C-ERRTDKTHSEKFQ
Host	Goat
Theoretical MW (kDa)	64.3, 62.4, 60.2
Reactivity	Human
Specificity	This antibody is expected to recognize all reported isoforms (NP_954870.2, NP_954868.1 and NP_954869.1). It may cross-react with the almost identical TPTE2 (GeneID 93492; NP_570141.2, NP_954864.1, NP_954863.1).
Form	Liquid
Purification	Antigen affinity purification
Concentration	0.5 mg/mL
Quality Control Testing	Antibody Reactive Against Synthetic Peptide.

Recommend Usage	ELISA (1:16000) Western Blot (1-3 ug/mL) The optimal working dilution should be determined by the end user.
Storage Buffer	In Tris saline, pH 7.3 (0.5% BSA, 0.02% sodium azide)
Storage Instruction	Store at -20°C. Aliquot to avoid repeated freezing and thawing.
Note	This product contains sodium azide: a POISONOUS AND HAZARDOUS SUBSTANCE which should be handled by trained staff only.

Applications

- Western Blot (Tissue lysate)

TPTE polyclonal antibody (Cat # PAB7091) (1 ug/mL) staining of human testis lysate (35 ug protein in RIPA buffer). Primary incubation was 1 hour. Detected by chemiluminescence.

- Enzyme-linked Immunoabsorbent Assay

Gene Info — TPTE

Entrez GeneID	7179
Protein Accession#	NP_954870.2 ; NP_954868.1 ; NP_954869.1
Gene Name	TPTE
Gene Alias	PTEN2
Gene Description	transmembrane phosphatase with tensin homology
Omim ID	604336
Gene Ontology	Hyperlink
Gene Summary	putative protein-tyrosine phosphatase
Other Designations	OTTHUMP00000082790 PTEN-related tyrosine phosphatase tensin, putative protein-tyrosine phosphatase

Publication Reference

- [The TPTE gene family: cellular expression, subcellular localization and alternative splicing.](#)

Tapparel C, Reymond A, Girardet C, Guillou L, Lyle R, Lamon C, Hutter P, Antonarakis SE.

Gene 2003 Dec; 23(23):8890.

Application: IF, IHC-P, WB-Tr, Human, Monkey, COS-7 cells, Testis

Disease

- [Kidney Failure](#)