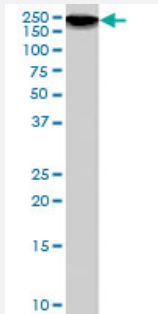


DSCAM polyclonal antibody

Catalog # PAB7084

Size 100 ug

Applications



Western Blot (Cell lysate)

DSCAM polyclonal antibody (Cat # PAB7084) (1 ug/mL) staining of NIH/3T3 cell lysate (35 ug protein in RIPA buffer). Primary incubation was 1 hour. Detected by chemiluminescence.

Specification

Product Description	Goat polyclonal antibody raised against synthetic peptide of DSCAM.
Immunogen	A synthetic peptide corresponding to human DSCAM.
Sequence	C-DSWDSAQRTKDVSPQ
Host	Goat
Theoretical MW (kDa)	222, 174
Reactivity	Human
Specificity	This antibody is expected to recognize both reported isoforms (NP_001380.2 and NP_996770.1).
Form	Liquid
Purification	Antigen affinity purification
Concentration	0.5 mg/mL
Quality Control Testing	Antibody Reactive Against Synthetic Peptide.

Recommend Usage	ELISA (1:4000) Western Blot (1-3 ug/mL) The optimal working dilution should be determined by the end user.
Storage Buffer	In Tris saline, pH 7.3 (0.5% BSA, 0.02% sodium azide)
Storage Instruction	Store at -20°C. Aliquot to avoid repeated freezing and thawing.
Note	This product contains sodium azide: a POISONOUS AND HAZARDOUS SUBSTANCE which should be handled by trained staff only.

Applications

- Western Blot (Cell lysate)

DSCAM polyclonal antibody (Cat # PAB7084) (1 ug/mL) staining of NIH/3T3 cell lysate (35 ug protein in RIPA buffer). Primary incubation was 1 hour. Detected by chemiluminescence.

- Enzyme-linked Immunoabsorbent Assay

Gene Info — DSCAM

Entrez GeneID	1826
Protein Accession#	NP_001380.2;NP_996770.1
Gene Name	DSCAM
Gene Alias	CHD2-42, CHD2-52
Gene Description	Down syndrome cell adhesion molecule
Omim ID	602523
Gene Ontology	Hyperlink
Other Designations	OTTHUMP00000109193 human CHD2-52 down syndrome cell adhesion molecule

Publication Reference

- [The Down syndrome cell adhesion molecule \(DSCAM\) interacts with and activates Pak.](#)

Li W, Guan KL.

The Journal of Biological Chemistry 2004 Jul; 279(31):32824.

Application: IP, WB, Human, Mouse, HEK 293 cells, Mouse brains, Recombinant protein

Disease

- [Bipolar Disorder](#)
- [Celiac Disease](#)
- [Genetic Predisposition to Disease](#)
- [Postmortem Changes](#)
- [Tobacco Use Disorder](#)