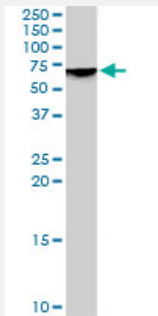


PAK1 polyclonal antibody

Catalog # PAB7082 Size 100 ug

Applications



Western Blot (Tissue lysate)

PAK1 polyclonal antibody (Cat # PAB7082) (1 ug/mL) staining of rat brain lysate (35 ug protein in RIPA buffer). Primary incubation was 1 hour. Detected by chemiluminescence.

Specification

Product Description Goat polyclonal antibody raised against synthetic peptide of PAK1.

Immunogen A synthetic peptide corresponding to human PAK1.

Sequence C-NTEKQKKKPKMSDE

Host Goat

Theoretical MW (kDa) 60.6

Reactivity Human, Mouse, Rat

Specificity This antibody is not expected to cross-react with PAK3.

Form Liquid

Purification Antigen affinity purification

Concentration 0.5 mg/mL

Quality Control Testing Antibody Reactive Against Synthetic Peptide.

Recommend Usage	ELISA (1:4000) Western Blot (1-3 ug/mL) The optimal working dilution should be determined by the end user.
Storage Buffer	In Tris saline, pH 7.3 (0.5% BSA, 0.02% sodium azide)
Storage Instruction	Store at -20°C. Aliquot to avoid repeated freezing and thawing.
Note	This product contains sodium azide: a POISONOUS AND HAZARDOUS SUBSTANCE which should be handled by trained staff only.

Applications

- Western Blot (Tissue lysate)

PAK1 polyclonal antibody (Cat # PAB7082) (1 ug/mL) staining of rat brain lysate (35 ug protein in RIPA buffer). Primary incubation was 1 hour. Detected by chemiluminescence.

- Enzyme-linked Immunoabsorbent Assay

Gene Info — PAK1

Entrez GeneID	5058
Protein Accession#	NP_002567.3
Gene Name	PAK1
Gene Alias	MGC130000, MGC130001, PAKalpha
Gene Description	p21 protein (Cdc42/Rac)-activated kinase 1
Omim ID	602590
Gene Ontology	Hyperlink
Gene Summary	PAK proteins are critical effectors that link RhoGTPases to cytoskeleton reorganization and nuclear signaling. PAK proteins, a family of serine/threonine p21-activating kinases, include PAK1, PAK2, PAK3 and PAK4. These proteins serve as targets for the small GTP binding proteins Cdc42 and Rac and have been implicated in a wide range of biological activities. PAK1 regulates cell motility and morphology. Alternatively spliced transcript variants encoding different isoforms have been found for this gene. [provided by RefSeq]
Other Designations	STE20 homolog, yeast p21-activated kinase 1 p21/Cdc42/Rac1-activated kinase 1 (STE20 homolog, yeast) p21/Cdc42/Rac1-activated kinase 1 (yeast Ste20-related)

Publication Reference

- [Role of p21-activated kinase pathway defects in the cognitive deficits of Alzheimer disease.](#)

Zhao L, Ma QL, Calon F, Harris-White ME, Yang F, Lim GP, Morihara T, Ubeda OJ, Ambegaokar S, Hansen JE, Weisbart RH, Teter B, Frautschy SA, Cole GM.

Nature Neuroscience 2006 Feb; 9(2):234.

Application: WB-Ti, Human, Brain from patients with Alzheimer disease

Pathway

- [Axon guidance](#)
- [Chemokine signaling pathway](#)
- [Epithelial cell signaling in Helicobacter pylori infection](#)
- [ErbB signaling pathway](#)
- [Fc gamma R-mediated phagocytosis](#)
- [Focal adhesion](#)
- [MAPK signaling pathway](#)
- [Natural killer cell mediated cytotoxicity](#)
- [Regulation of actin cytoskeleton](#)
- [Renal cell carcinoma](#)
- [T cell receptor signaling pathway](#)

Disease

- [Carcinoma](#)
- [Esophageal Neoplasms](#)
- [HIV Infections](#)
- [Tobacco Use Disorder](#)