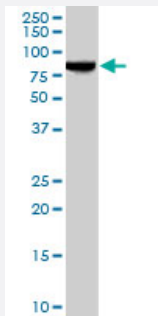


# FXR1 polyclonal antibody

Catalog # PAB7080      Size 100 ug

## Applications



### Western Blot (Cell lysate)

FXR1 polyclonal antibody (Cat # PAB7080) (0.2 ug/mL) staining of NIH/3T3 cell lysate (35 ug protein in RIPA buffer). Primary incubation was 1 hour. Detected by chemiluminescence.

## Specification

<b>Product Description</b>	Goat polyclonal antibody raised against synthetic peptide of FXR1.
<b>Immunogen</b>	A synthetic peptide corresponding to human FXR1.
<b>Sequence</b>	C-RIEGDNENKLPRED
<b>Host</b>	Goat
<b>Theoretical MW (kDa)</b>	69.7, 60.8, 59.9
<b>Reactivity</b>	Mouse
<b>Specificity</b>	This antibody is expected to recognize all reported isoforms (NP_005078.2, NP_001013456.1 and NP_001013457.1).
<b>Form</b>	Liquid
<b>Purification</b>	Antigen affinity purification
<b>Concentration</b>	0.5 mg/mL
<b>Quality Control Testing</b>	Antibody Reactive Against Synthetic Peptide.

<b>Recommend Usage</b>	ELISA (1:128000) Western Blot (0.1-0.3 ug/mL) The optimal working dilution should be determined by the end user.
<b>Storage Buffer</b>	In Tris saline, pH 7.3 (0.5% BSA, 0.02% sodium azide)
<b>Storage Instruction</b>	Store at -20°C. Aliquot to avoid repeated freezing and thawing.
<b>Note</b>	This product contains sodium azide: a POISONOUS AND HAZARDOUS SUBSTANCE which should be handled by trained staff only.

## Applications

- Western Blot (Cell lysate)

FXR1 polyclonal antibody (Cat # PAB7080) (0.2 ug/mL) staining of NIH/3T3 cell lysate (35 ug protein in RIPA buffer). Primary incubation was 1 hour. Detected by chemiluminescence.

- Enzyme-linked Immunoabsorbent Assay

## Gene Info — FXR1

<b>Entrez GeneID</b>	<a href="#">8087</a>
<b>Protein Accession#</b>	<a href="#">NP_005078.2;NP_001013456.1;NP_001013457.1</a>
<b>Gene Name</b>	FXR1
<b>Gene Alias</b>	-
<b>Gene Description</b>	fragile X mental retardation, autosomal homolog 1
<b>Omim ID</b>	<a href="#">600819</a>
<b>Gene Ontology</b>	<a href="#">Hyperlink</a>
<b>Gene Summary</b>	The protein encoded by this gene is an RNA binding protein that interacts with the functionally-similar proteins FMR1 and FXR2. These proteins shuttle between the nucleus and cytoplasm and associate with polyribosomes, predominantly with the 60S ribosomal subunit. Three transcript variants encoding different isoforms have been found for this gene. [provided by RefSeq]
<b>Other Designations</b>	fragile X mental retardation-related protein 1

## Publication Reference

- [Evidence for linkage on chromosome 3q25-27 in a large autism extended pedigree.](#)

Coon H, Matsunami N, Stevens J, Miller J, Pingree C, Camp NJ, Thomas A, Krasny L, Lainhart J, Leppert MF, McMahon W.  
Human Heredity 2005 Jan; 60(4):220.