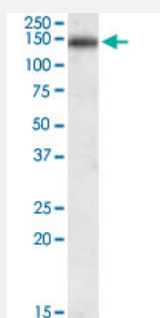


# CILP polyclonal antibody

Catalog # PAB7075      Size 100 ug

## Applications



### Western Blot (Tissue lysate)

CILP polyclonal antibody (Cat # PAB7075) (0.03 ug/mL) staining of rat spinal cord lysate (35 ug protein in RIPA buffer). Primary incubation was 1 hour. Detected by chemiluminescence.

## Specification

<b>Product Description</b>	Goat polyclonal antibody raised against synthetic peptide of CILP.
<b>Immunogen</b>	A synthetic peptide corresponding to human CILP.
<b>Sequence</b>	C-NYRRTDHEDPRVK
<b>Host</b>	Goat
<b>Theoretical MW (kDa)</b>	133
<b>Reactivity</b>	Rat
<b>Form</b>	Liquid
<b>Purification</b>	Antigen affinity purification
<b>Concentration</b>	0.5 mg/mL
<b>Quality Control Testing</b>	Antibody Reactive Against Synthetic Peptide.
<b>Recommend Usage</b>	ELISA (1:128000) Western Blot (0.1-0.3 ug/mL) The optimal working dilution should be determined by the end user.

<b>Storage Buffer</b>	In Tris saline, pH 7.3 (0.5% BSA, 0.02% sodium azide)
<b>Storage Instruction</b>	Store at -20°C. Aliquot to avoid repeated freezing and thawing.
<b>Note</b>	This product contains sodium azide: a POISONOUS AND HAZARDOUS SUBSTANCE which should be handled by trained staff only.

## Applications

- Western Blot (Tissue lysate)

CILP polyclonal antibody (Cat # PAB7075) (0.03 ug/mL) staining of rat spinal cord lysate (35 ug protein in RIPA buffer). Primary incubation was 1 hour. Detected by chemiluminescence.

- Enzyme-linked Immunoabsorbent Assay

## Gene Info — CILP

<b>Entrez GeneID</b>	<a href="#">8483</a>
<b>Protein Accession#</b>	<a href="#">NP_003604.2</a>
<b>Gene Name</b>	CILP
<b>Gene Alias</b>	CILP-1, HsT18872
<b>Gene Description</b>	cartilage intermediate layer protein, nucleotide pyrophosphohydrolase
<b>Omim ID</b>	<a href="#">603489</a> <a href="#">603932</a>
<b>Gene Ontology</b>	<a href="#">Hyperlink</a>
<b>Gene Summary</b>	Major alterations in the composition of the cartilage extracellular matrix occur in joint disease, such as osteoarthritis. This gene encodes the cartilage intermediate layer protein (CILP), which increases in early osteoarthritis cartilage. The encoded protein was thought to encode a protein precursor for 2 different proteins, namely CILP and a homolog of NTPPHase, however later studies identified no nucleotide pyrophosphatase phosphodiesterase (NPP) activity. One isoform of the protein, CILP-1, functions as an IGF-1 antagonist. [provided by RefSeq]
<b>Other Designations</b>	cartilage intermediate layer protein cartilage intermediate layer protein 1 C1 cartilage intermediate layer protein 1 C2

## Publication Reference

- [A functional SNP in CILP, encoding cartilage intermediate layer protein, is associated with susceptibility to lumbar disc disease.](#)

Seki S, Kawaguchi Y, Chiba K, Mikami Y, Kizawa H, Oya T, Mio F, Mori M, Miyamoto Y, Masuda I, Tsunoda T, Kamata M, Kubo T, Toyama Y, Kimura T, Nakamura Y, Ikegawa S.

Nature Genetics 2005 May; 37(6):607.

## Disease

- [Disease Progression](#)
- [Genetic Predisposition to Disease](#)
- [Osteoarthritis](#)