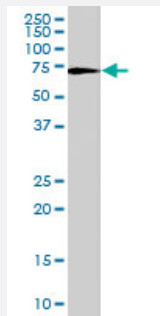


# MSN polyclonal antibody

Catalog # PAB7062      Size 100 ug

## Applications



### Western Blot (Tissue lysate)

MSN polyclonal antibody (Cat # PAB7062) (1 ug/mL) staining of human spleen lysate (35 ug protein in RIPA buffer). Primary incubation was 1 hour. Detected by chemiluminescence.

## Specification

<b>Product Description</b>	Goat polyclonal antibody raised against synthetic peptide of MSN.
<b>Immunogen</b>	A synthetic peptide corresponding to human MSN.
<b>Sequence</b>	C-NARDESKKTAND
<b>Host</b>	Goat
<b>Theoretical MW (kDa)</b>	67.8
<b>Reactivity</b>	Human, Mouse
<b>Form</b>	Liquid
<b>Purification</b>	Antigen affinity purification
<b>Concentration</b>	0.5 mg/mL
<b>Quality Control Testing</b>	Antibody Reactive Against Synthetic Peptide.
<b>Recommend Usage</b>	ELISA (1:16000) Western Blot (1-3 ug/mL) The optimal working dilution should be determined by the end user.

<b>Storage Buffer</b>	In Tris saline, pH 7.3 (0.5% BSA, 0.02% sodium azide)
<b>Storage Instruction</b>	Store at -20°C. Aliquot to avoid repeated freezing and thawing.
<b>Note</b>	This product contains sodium azide: a POISONOUS AND HAZARDOUS SUBSTANCE which should be handled by trained staff only.

## Applications

- Western Blot (Tissue lysate)

MSN polyclonal antibody (Cat # PAB7062) (1 ug/mL) staining of human spleen lysate (35 ug protein in RIPA buffer). Primary incubation was 1 hour. Detected by chemiluminescence.

- Enzyme-linked Immunoabsorbent Assay

## Gene Info — MSN

<b>Entrez GeneID</b>	<a href="#">4478</a>
<b>Protein Accession#</b>	<a href="#">NP_002435.1</a>
<b>Gene Name</b>	MSN
<b>Gene Alias</b>	-
<b>Gene Description</b>	moesin
<b>Omim ID</b>	<a href="#">309845</a>
<b>Gene Ontology</b>	<a href="#">Hyperlink</a>
<b>Gene Summary</b>	Moesin (for membrane-organizing extension spike protein) is a member of the ERM family which includes ezrin and radixin. ERM proteins appear to function as cross-linkers between plasma membranes and actin-based cytoskeletons. Moesin is localized to filopodia and other membranous protrusions that are important for cell-cell recognition and signaling and for cell movement. [provided by RefSeq]
<b>Other Designations</b>	OTTHUMP00000023438

## Publication Reference

- [Mutagenesis of the ezrin-radixin-moesin binding domain of L-selectin tail affects shedding, microvillar positioning, and leukocyte tethering.](#)

Ivetic A, Florey O, Deka J, Haskard DO, Ager A, Ridley AJ.

The Journal of Biological Chemistry 2004 Aug; 279(32):33263.

## Pathway

- [Leukocyte transendothelial migration](#)
- [Regulation of actin cytoskeleton](#)