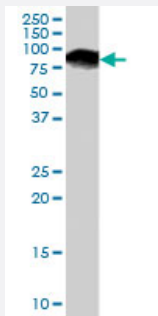


RDX polyclonal antibody

Catalog # PAB7061 Size 100 ug

Applications



Western Blot (Tissue lysate)

RDX polyclonal antibody (Cat # PAB7061) (0.03 ug/mL) staining of human tonsil lysate (35 ug protein in RIPA buffer). Primary incubation was 1 hour. Detected by chemiluminescence.

Specification

Product Description Goat polyclonal antibody raised against synthetic peptide of RDX.

Immunogen A synthetic peptide corresponding to human RDX.

Sequence C-QARDETKKTQND

Host Goat

Theoretical MW (kDa) 68.5

Reactivity Human, Mouse, Rat

Form Liquid

Purification Antigen affinity purification

Concentration 0.5 mg/mL

Quality Control Testing Antibody Reactive Against Synthetic Peptide.

Recommend Usage
ELISA (1:4000)
Western Blot (1-3 ug/mL)
The optimal working dilution should be determined by the end user.

Storage Buffer	In Tris saline, pH 7.3 (0.5% BSA, 0.02% sodium azide)
Storage Instruction	Store at -20°C. Aliquot to avoid repeated freezing and thawing.
Note	This product contains sodium azide: a POISONOUS AND HAZARDOUS SUBSTANCE which should be handled by trained staff only.

Applications

- Western Blot (Tissue lysate)

RDX polyclonal antibody (Cat # PAB7061) (0.03 ug/mL) staining of human tonsil lysate (35 ug protein in RIPA buffer). Primary incubation was 1 hour. Detected by chemiluminescence.

- Enzyme-linked Immunoabsorbent Assay

Gene Info — RDX

Entrez GeneID	5962
Protein Accession#	NP_002897.1
Gene Name	RDX
Gene Alias	DFNB24
Gene Description	radixin
Omim ID	179410 611022
Gene Ontology	Hyperlink
Gene Summary	Radixin is a cytoskeletal protein that may be important in linking actin to the plasma membrane. It is highly similar in sequence to both ezrin and moesin. The radixin gene has been localized by fluorescence in situ hybridization to 11q23. A truncated version representing a pseudogene (RDXP2) was assigned to Xp21.3. Another pseudogene that seemed to lack introns (RDXP1) was mapped to 11p by Southern and PCR analyses. [provided by RefSeq]
Other Designations	-

Publication Reference

- [Mutagenesis of the ezrin-radixin-moesin binding domain of L-selectin tail affects shedding, microvillar positioning, and leukocyte tethering.](#)

Ivetic A, Florey O, Deka J, Haskard DO, Ager A, Ridley AJ.

The Journal of Biological Chemistry 2004 Aug; 279(32):33263.

Pathway

- [Regulation of actin cytoskeleton](#)

Disease

- [Genetic Predisposition to Disease](#)
- [Glaucoma](#)