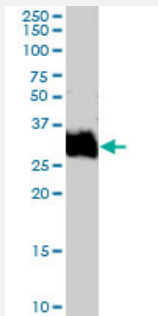


# FOSL1 polyclonal antibody

Catalog # PAB7046

Size 100 ug

## Applications



### Western Blot (Tissue lysate)

FOSL1 polyclonal antibody (Cat # PAB7046) (1 ug/mL) staining of human bone marrow lysate (35 ug protein in RIPA buffer). Primary incubation was 1 hour. Detected by chemiluminescence.

## Specification

**Product Description** Goat polyclonal antibody raised against synthetic peptide of FOSL1.

**Immunogen** A synthetic peptide corresponding to human FOSL1.

**Sequence** C-QREIEELQKQKER

**Host** Goat

**Theoretical MW (kDa)** 29.4

**Reactivity** Human

**Specificity** This antibody is not expected to cross-react with V-FOS.

**Form** Liquid

**Purification** Antigen affinity purification

**Concentration** 0.5 mg/mL

**Quality Control Testing** Antibody Reactive Against Synthetic Peptide.

<b>Recommend Usage</b>	ELISA (1:1000) Western Blot (0.1-0.3 ug/mL) The optimal working dilution should be determined by the end user.
<b>Storage Buffer</b>	In Tris saline, pH 7.3 (0.5% BSA, 0.02% sodium azide)
<b>Storage Instruction</b>	Store at -20°C. Aliquot to avoid repeated freezing and thawing.
<b>Note</b>	This product contains sodium azide: a POISONOUS AND HAZARDOUS SUBSTANCE which should be handled by trained staff only.

## Applications

- Western Blot (Tissue lysate)

FOSL1 polyclonal antibody (Cat # PAB7046) (1 ug/mL) staining of human bone marrow lysate (35 ug protein in RIPA buffer). Primary incubation was 1 hour. Detected by chemiluminescence.

- Enzyme-linked Immunoabsorbent Assay

## Gene Info — FOSL1

<b>Entrez GeneID</b>	<a href="#">8061</a>
<b>Protein Accession#</b>	<a href="#">NP_005429.1</a>
<b>Gene Name</b>	FOSL1
<b>Gene Alias</b>	FRA, FRA1, fra-1
<b>Gene Description</b>	FOS-like antigen 1
<b>Omim ID</b>	<a href="#">136515</a>
<b>Gene Ontology</b>	<a href="#">Hyperlink</a>
<b>Gene Summary</b>	The Fos gene family consists of 4 members: FOS, FOSB, FOSL1, and FOSL2. These genes encode leucine zipper proteins that can dimerize with proteins of the JUN family, thereby forming the transcription factor complex AP-1. As such, the FOS proteins have been implicated as regulators of cell proliferation, differentiation, and transformation. [provided by RefSeq]
<b>Other Designations</b>	FOS-like antigen-1 Fos-related antigen

## Publication Reference

- [FRA-1 expression level regulates proliferation and invasiveness of breast cancer cells.](#)

Belguise K, Kersual N, Galtier F, Chalbos D.

Oncogene 2005 Feb; 24(8):1434.

Application: WB-Ce, WB-Tr, Human, MCF-7, T47D, ZR75.1, BT474, SKBR3, MDA436MDA435, MDA231 cells

## Pathway

- [Wnt signaling pathway](#)

## Disease

- [Cardiovascular Diseases](#)
- [Diabetes Mellitus](#)
- [Disease Models](#)
- [Edema](#)
- [Genetic Predisposition to Disease](#)