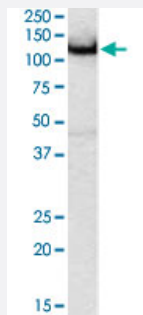


AMPH polyclonal antibody

Catalog # PAB7026

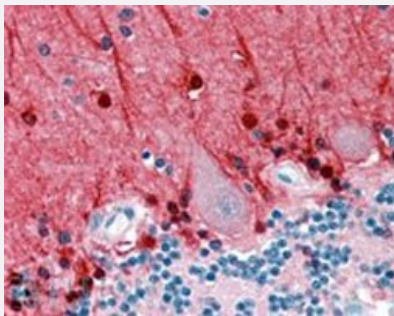
Size 100 ug

Applications



Western Blot (Tissue lysate)

AMPH polyclonal antibody (Cat # PAB7026) (0.5 ug/mL) staining of mouse brain lysate (35 ug protein in RIPA buffer). Primary incubation was 1 hour. Detected by chemiluminescence.



Immunohistochemistry (Formalin/PFA-fixed paraffin-embedded sections)

AMPH polyclonal antibody (Cat # PAB7026, 2.5 ug/mL) staining of paraffin embedded human cerebellum. Steamed antigen retrieval with citrate buffer pH 6, AP-staining.

Specification

Product Description	Goat polyclonal antibody raised against synthetic peptide of AMPH.
Immunogen	A synthetic peptide corresponding to human AMPH.
Sequence	C-KRKDESRISKAE
Host	Goat
Theoretical MW (kDa)	76.3, 71.9
Reactivity	Human, Mouse
Specificity	This antibody is expected to recognize both reported isoforms (NP_001626.1 and NP_647477.1).

Form	Liquid
Purification	Antigen affinity purification
Concentration	0.5 mg/mL
Quality Control Testing	Antibody Reactive Against Synthetic Peptide.
Recommend Usage	ELISA (1:16000) Western blot (0.1-0.5 ug/mL) Immunohistochemistry (Formalin/PFA-fixed paraffin-embedded sections) (2-4 ug/mL) The optimal working dilution should be determined by the end user.
Storage Buffer	In Tris saline, pH 7.3 (0.5% BSA, 0.02% sodium azide)
Storage Instruction	Store at -20°C. Aliquot to avoid repeated freezing and thawing.
Note	This product contains sodium azide: a POISONOUS AND HAZARDOUS SUBSTANCE which should be handled by trained staff only.

Applications

- Western Blot (Tissue lysate)

AMPH polyclonal antibody (Cat # PAB7026) (0.5 ug/mL) staining of mouse brain lysate (35 ug protein in RIPA buffer). Primary incubation was 1 hour. Detected by chemiluminescence.

- Immunohistochemistry (Formalin/PFA-fixed paraffin-embedded sections)

AMPH polyclonal antibody (Cat # PAB7026, 2.5 ug/mL) staining of paraffin embedded human cerebellum. Steamed antigen retrieval with citrate buffer pH 6, AP-staining.

- Enzyme-linked Immunoabsorbent Assay

Gene Info — AMPH

Entrez GeneID	273
Protein Accession#	NP_001626.1;NP_647477.1
Gene Name	AMPH
Gene Alias	AMPH1
Gene Description	amphiphysin

Omim ID	600418
Gene Ontology	Hyperlink
Gene Summary	This gene encodes a protein associated with the cytoplasmic surface of synaptic vesicles. A subset of patients with stiff-man syndrome who were also affected by breast cancer are positive for autoantibodies against this protein. Alternate splicing of this gene results in two transcript variants encoding different isoforms. Additional splice variants have been described, but their full length sequences have not been determined. [provided by RefSeq]
Other Designations	Stiff-Man syndrome with breast cancer 128kDa autoantigen amphiphysin (Stiff-Mann syndrome with breast cancer 128kD autoantigen)

Publication Reference

- [Paraneoplastic stiff-person syndrome: passive transfer to rats by means of IgG antibodies to amphiphysin.](#)

Sommer C, Weishaupt A, Brinkhoff J, Biko L, Wessig C, Gold R, Toyka KV.

The Lancet 2005 Apr; 365(9468):1406.

Application: ELISA, IHC-Fr, WB, Human, Rat, Human cerebrospinal fluid, Serum, Rat brains, Rat plasma, Rat spinal cord

Pathway

- [Fc gamma R-mediated phagocytosis](#)

Disease

- [Tobacco Use Disorder](#)