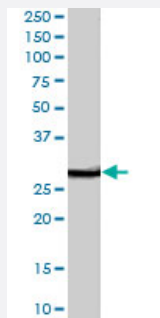


VTI1B polyclonal antibody

Catalog # PAB7012 Size 100 ug

Applications



Western Blot (Tissue lysate)

VTI1B polyclonal antibody (Cat # PAB7012) (1 ug/mL) staining of human duodenum lysate (35 ug protein in RIPA buffer). Primary incubation was 1 hour. Detected by chemiluminescence.

Specification

Product Description Goat polyclonal antibody raised against synthetic peptide of VTI1B.

Immunogen A synthetic peptide corresponding to human VTI1B.

Sequence C-RDFDEKQQEANET

Host Goat

Theoretical MW (kDa) 26.7

Reactivity Human

Form Liquid

Purification Antigen affinity purification

Concentration 0.5 mg/mL

Quality Control Testing Antibody Reactive Against Synthetic Peptide.

Recommend Usage
 ELISA (1:32000)
 Western Blot (1-3 ug/mL)
 The optimal working dilution should be determined by the end user.

Storage Buffer	In Tris saline, pH 7.3 (0.5% BSA, 0.02% sodium azide)
Storage Instruction	Store at -20°C. Aliquot to avoid repeated freezing and thawing.
Note	This product contains sodium azide: a POISONOUS AND HAZARDOUS SUBSTANCE which should be handled by trained staff only.

Applications

- Western Blot (Tissue lysate)

VT1B polyclonal antibody (Cat # PAB7012) (1 ug/mL) staining of human duodenum lysate (35 ug protein in RIPA buffer). Primary incubation was 1 hour. Detected by chemiluminescence.

- Enzyme-linked Immunoabsorbent Assay

Gene Info — VT1B

Entrez GeneID	10490
Protein Accession#	NP_006361.1
Gene Name	VT1B
Gene Alias	VTI1, VTI1-LIKE, VTI1L, VTI2
Gene Description	vesicle transport through interaction with t-SNAREs homolog 1B (yeast)
Omim ID	603207
Gene Ontology	Hyperlink
Other Designations	v-SNARE vesicle transport through interaction with t-SNAREs 1B vesicle-associated soluble NSF attachment protein receptor

Publication Reference

- [Syntaxin 6 and Vti1b form a novel SNARE complex, which is up-regulated in activated macrophages to facilitate exocytosis of tumor necrosis Factor-alpha.](#)

Murray RZ, Wylie FG, Khromykh T, Hume DA, Stow JL.

The Journal of Biological Chemistry 2005 Mar; 280(11):10478.

Application: IF, IP, WB, Mouse, Macrophages, Raw 264.7 cells

Pathway

- [SNARE interactions in vesicular transport](#)

Disease

- [Alzheimer disease](#)
- [Cardiovascular Diseases](#)
- [Diabetes Complications](#)
- [Metabolic Syndrome X](#)
- [Neoplasms](#)
- [Osteoporosis](#)